

# Apparel & Footwear

DTW - Data Migration of Resource

## Contents

<b>1</b>	<b>INTRODUCTION .....</b>	<b>3</b>
<b>2</b>	<b>TEMPLATES .....</b>	<b>3</b>
<b>2.1</b>	<b>Templates related to Resource .....</b>	<b>3</b>
<b>1.</b>	<b>ARGNS_RESOURCE - ARGNS_RESOURCE.....</b>	<b>3</b>
<b>2.1.1</b>	<b>Template: ARGNS_RESOURCE - ARGNS_RESOURCE .....</b>	<b>3</b>
<b>3</b>	<b>DATA IMPORT PROCESS.....</b>	<b>3</b>
<b>3.1</b>	<b>Excel Preparation for POM Resource.....</b>	<b>3</b>
<b>4</b>	<b>CSV files import trough DTW–POM Resource.....</b>	<b>4</b>

## 1 INTRODUCTION

This document contains the necessary information to prepare and execute data migration for Resource using the DTW tool.

## 2 TEMPLATES

### 2.1 Templates related to Resource

To import data related to POM definition the following Excel templates need to be completed:

1. ARGNS\_RESOURCE - ARGNS\_RESOURCE

#### 2.1.1 Template: ARGNS\_RESOURCE - ARGNS\_RESOURCE

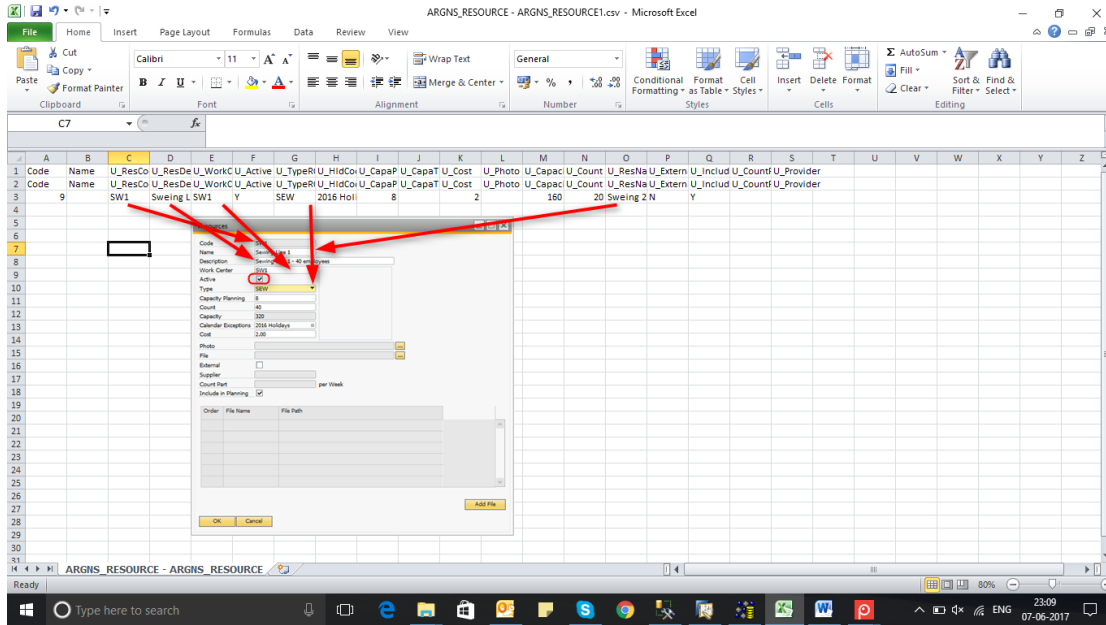
This is the template that will hold the general information for each Resource.

The relevant fields in this template are:

1. Code: SAP Internal Code. This code is a sequence starting from 1. It must be unique
2. Name: This should be blank
3. U\_ResCode: Resource code
4. U\_ResDesc: Resourcedescription
5. U\_WorkCePrCode: Workcenter code
6. U\_Active: 'Y' to make active 'N' to make inactive
7. U\_TypeRCode: Type of resource
8. U\_HldCode: Holiday Code
9. U\_CapaPla: Capacity Planning
10. U\_Cost: Resource cost
11. U\_Capacity: Total capacity
12. U\_Count: No. of resources
13. U\_ResName: Resource Name
14. U\_External: 'Y' if it is external resource, 'N' if in house resource
15. U\_Include: 'Y' to include in planning, 'N' to exclude from planning

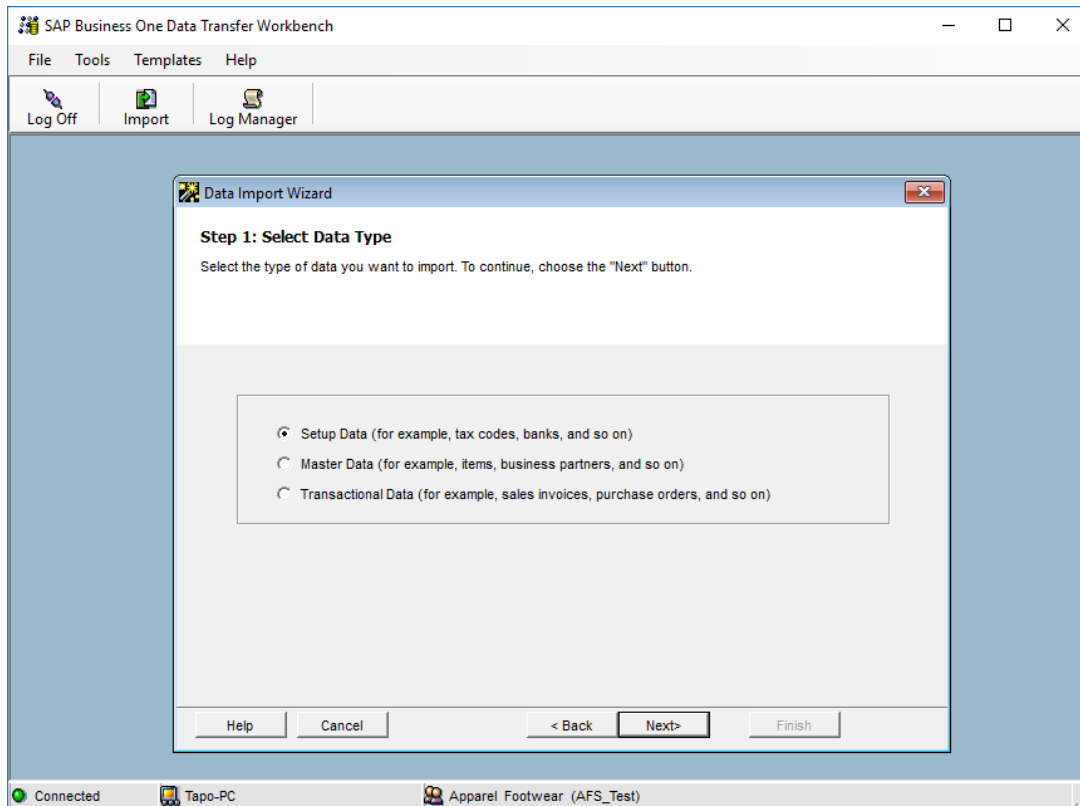
## 3 DATA IMPORT PROCESS

### 3.1 Excel Preparation for POM Resource

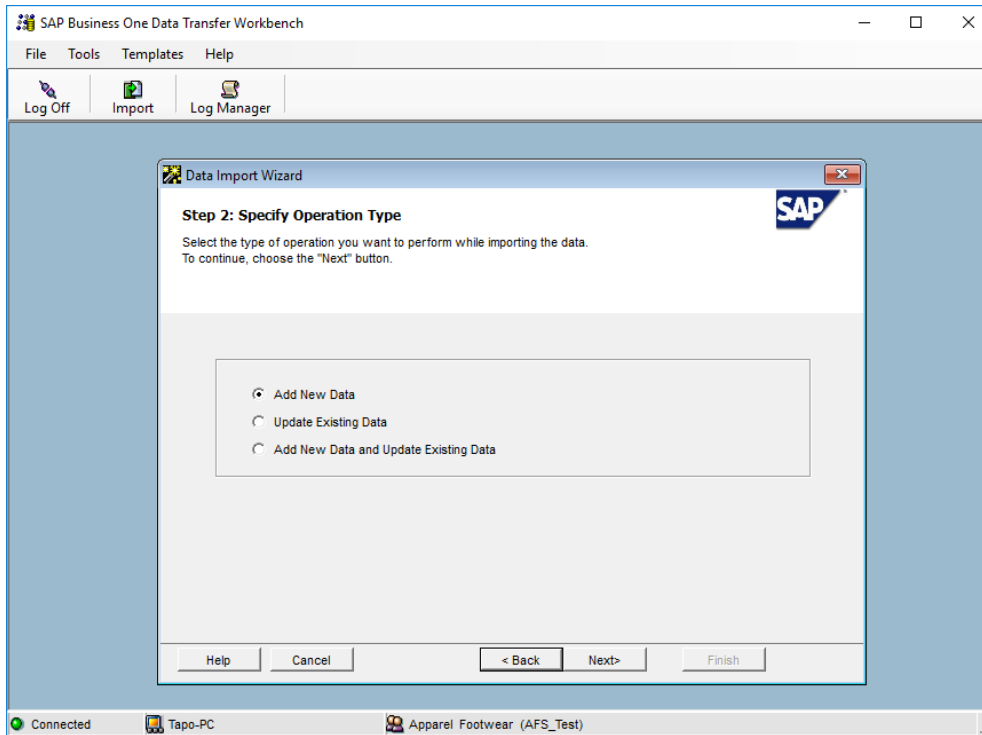


#### 4 CSV files import trough DTW–POM Resource

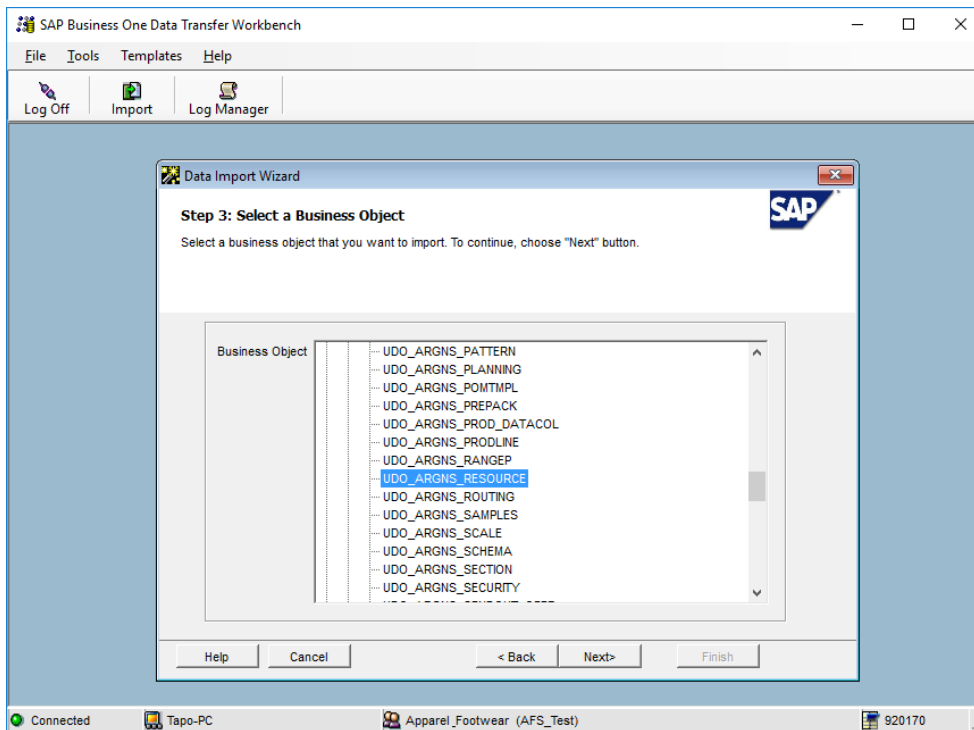
1. Click on the “Import” button to start the Data import wizard
2. Select setup data as the data type for importing Resource definition



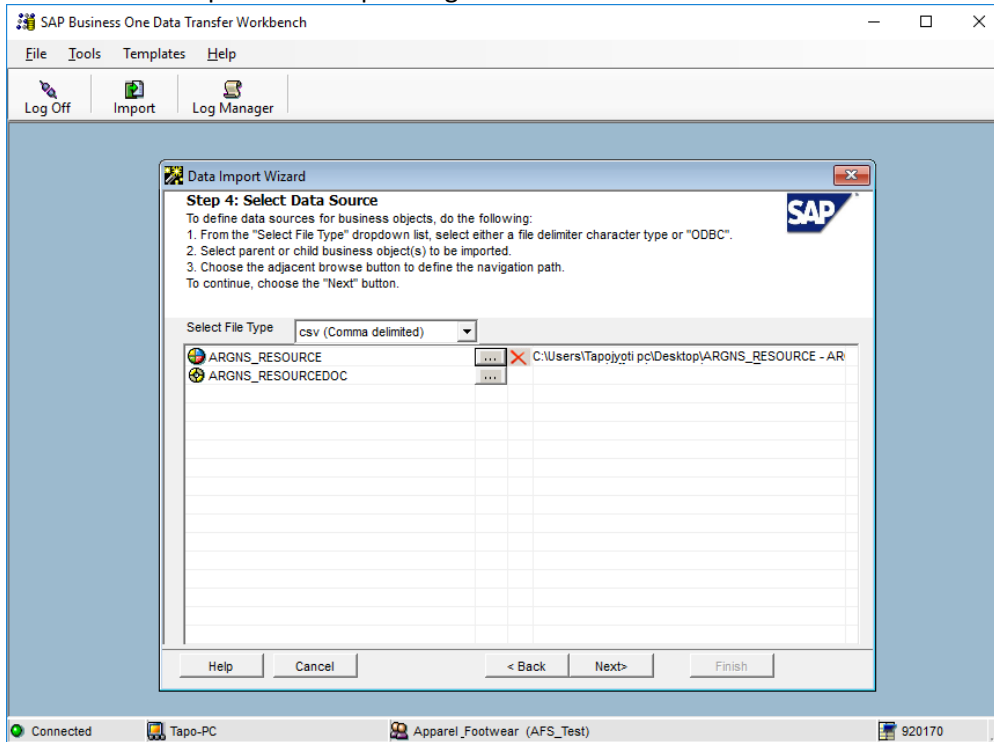
3. Select Add new data as the operation type (Please note that if you are working with already existing styles, then select the Update existing data option or the Add new data and Update existing data if you are going to be updating data and loading new data all in the same process).



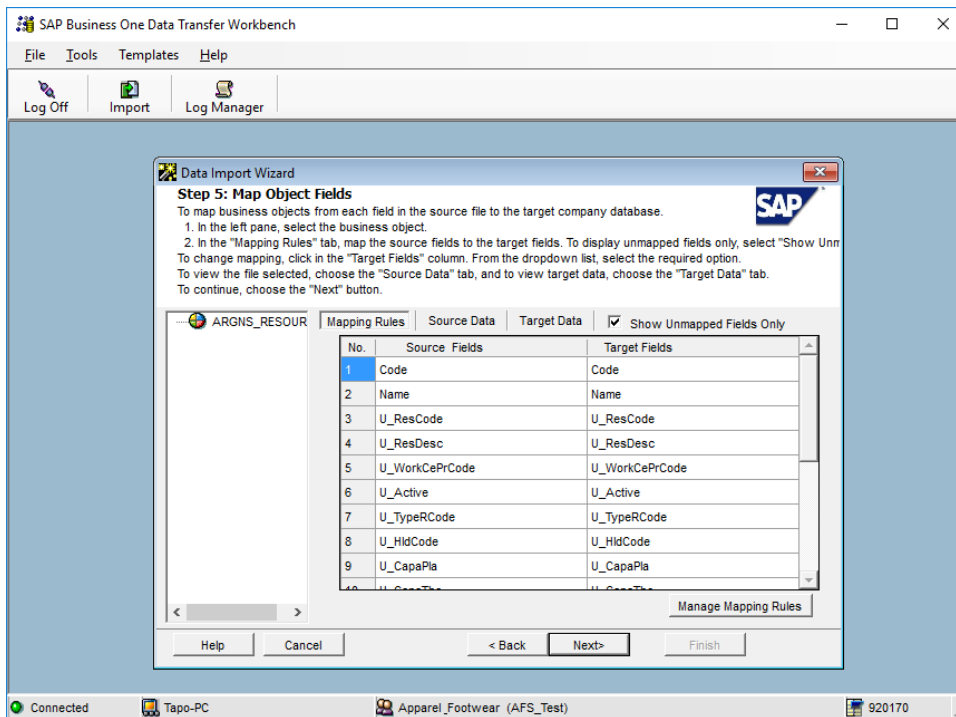
4. Search and select the UDO\_ARGNS\_RESOURCE object under the following path: User Defined Data > Object (UDO) > UDO\_ARGNS\_RESOURCE



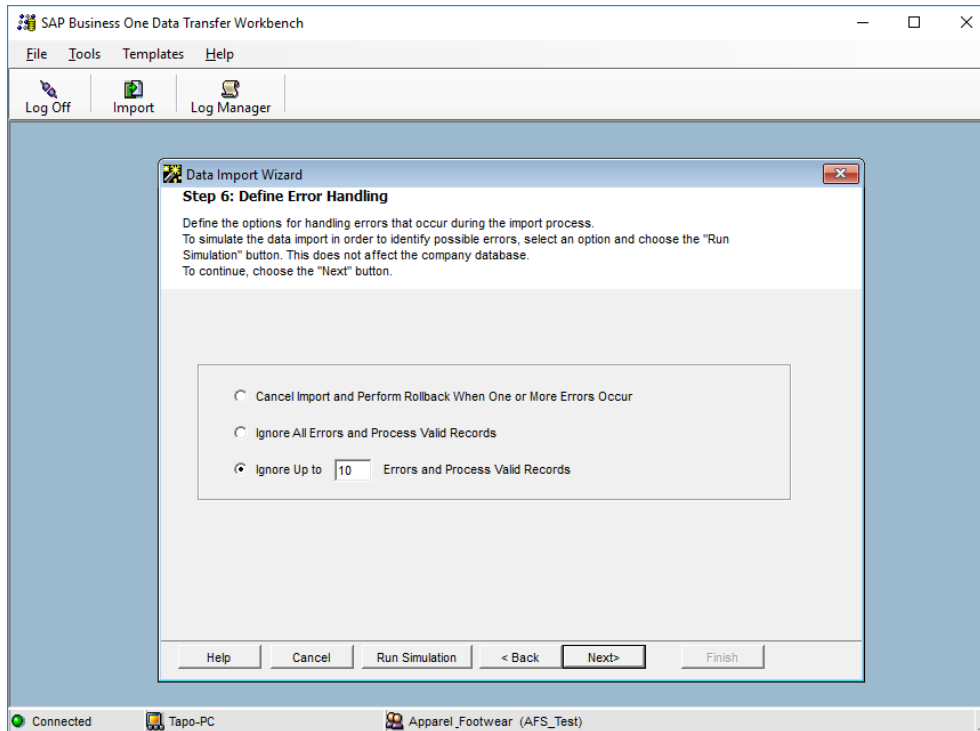
5. Select the templates corresponding to each definition table.



6. Map UDT fields. This is a confirmation screen for the data mapping.



7. Define error handling. It is usually recommended to select the last option to prevent from processing the entire file if a certain number of errors are found. In this step it is usually recommended to run the simulation process (by clicking the Run Simulation button) to get a preview of the data import result.



8. Start importing data. If no errors were found in the simulation process, click on the Import button to start the actual data import process. Please not that this does not guarantees that the data imported is accurate and it must be checked within SAP to make sure that everything is being loaded the way it should.