

Apparel & Footwear

UPC Code Setup

INDEX

1	Setup	3
1.1	Create a UPC Block	3
1.2	Assign the UPC Block to the company	3
2	Print UPC Codes	5
2.1	Set up	5
2.2	Print	5
3	CR_print_labels report	6

UPC Code Setup

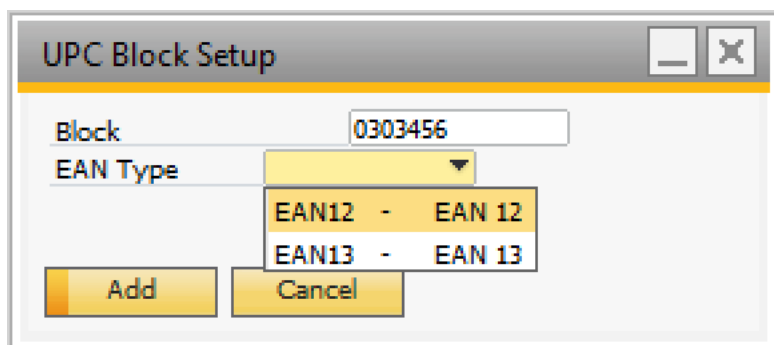
This document explains how to setup and print the UPC Codes for the SKU's generated through the Apparel & Footwear Addon.

1 Setup

1.1 Create a UPC Block

To create a UPC Block go to: Apparel & Footwear → Administration → Inventory → UPC Block Management → UPC Block Setup

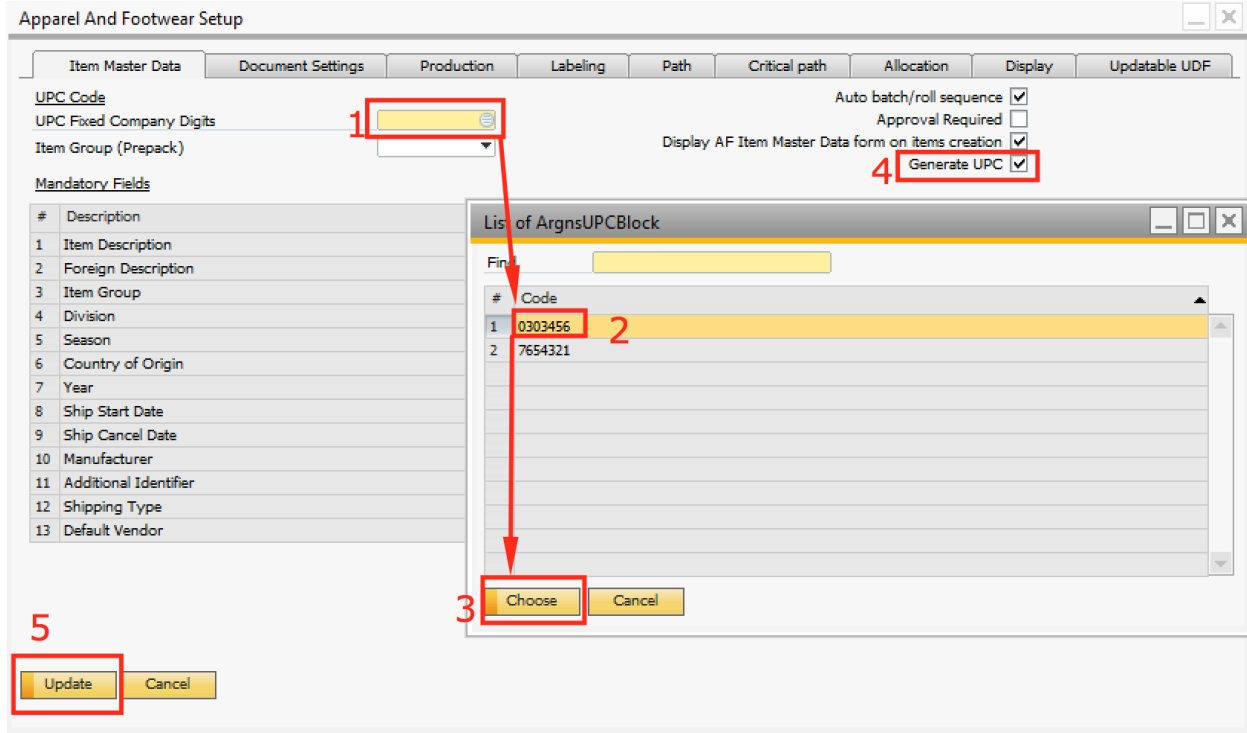
Type the purchased UPC Code number, choose the EAN Type and finally click on the Add button.



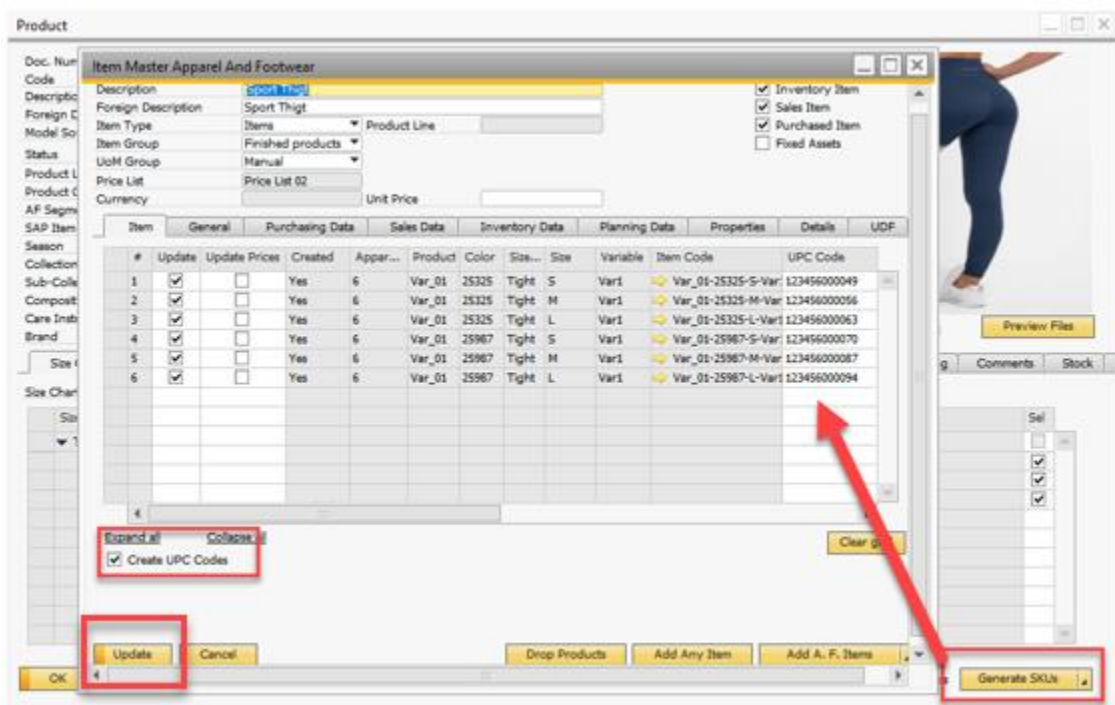
1.2 Assign the UPC Block to the company

To assign the UPC Block to the company go to: Apparel & Footwear → Administration → Setup → General Settings

1. In the Tab Item Master Data, in the input box for the field UPC Fixed Company Digit click on tab and the List of ArgnsUPCBlock window will pop up with all the UPC previously created.
2. Click on the desired UPC Block.
3. Click on the choose button.
4. Back on the Apparel and Footwear Setup window check on the Generate UPC checkbox.
5. Click on the update button.



Then when Generate SKUs, the UPC code are generated



Click on UPDATE button to see the changes.

2 Print UPC Codes

2.1 Set up

Apparel and Footwear → Administrator → Inventory → UPC Labels

#	Code	Name	File Name	Print
1	11	Label	Test1	Default
2	12	Label2	Test2	Apparel Print Report
3				Default

2.2 Print

The screenshot shows the SAP Sales Order interface. A context menu is open over the 'Contents' table, with 'Print UPC Label' highlighted. The menu options include: Cancel, Clgse, Duplicate, Modify Prod. Order Trims, **Print UPC Label**, Copy Order to Manufac. Order, View allocation Data, Row Details..., New Activity, Gross Profit..., Volume and Weight Calculation..., Opening and Closing Remarks, Transfer Request, Item Transfer, Generate Pick List, View Pick Lists, Related Activities, Related Opportunities, Relationship Map..., Critical Path OverView, Stock Allocation, and Customer Order Status.

#	Item No.	Quantity	Unit Price	Unit of Measure
1	Tr_001-C_003-3	23	204.40	USC
2				

Summary Type	Distr. ...	UoM C...
		Manual

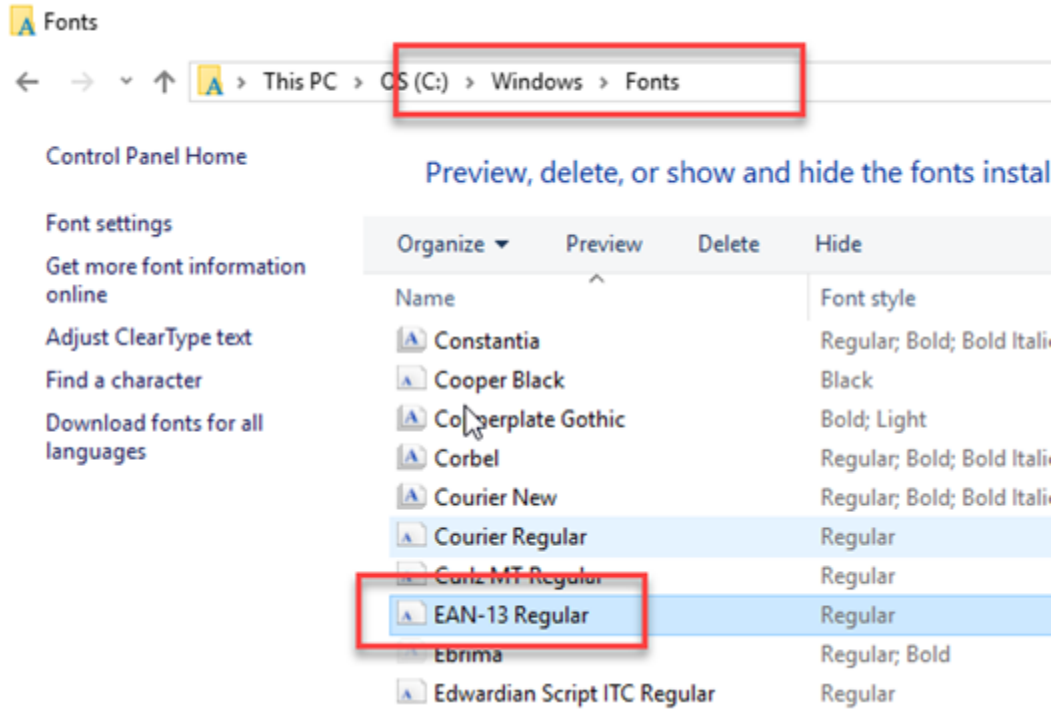
Field	Value
Total Before Discount	159.840,80 ARS
Discount	%
Freight	
Tax	33.566,57 ARS
Total	193.407,37 ARS

Apparel and Footwear → Inventory → UPC Labels printing → Labels

Select Price list, Label type, Add A&F Items, Style, qty and Print Labels

3 CR_print_labels report

In the CR_print_labels.rpt report, some fonts are not allowed, but Ean13 shows barcode.
Install the Ean13 font



And then in Crystal edit the report

