

Apparel & Footwear

Quick Style and PrePack Creation

Quick Style and PrePack Creation

Table of Contents

- 1 Quick style creation 3
 - 1.1 SKU Generation 3
 - 1.1 Steps To Add manually:..... 3
 - 1.2 Steps for Excel template 3
 - 1.3 Quick Style Multiple Prices 5

- 2 Quick style creation Optimized 7
 - 2.1 Steps To Add manually:..... 7
 - 2.2 Steps for Excel template 7

- 3 Quick Prepack creation 8
 - 3.1 Steps To Add manually:..... 8
 - 3.1 Steps for Excel template: 8

1 Quick style creation

1.1 SKU Generation

The quick style creation serves as a simple tool to create styles and SKUs, usually when receiving catalogs from suppliers or avoiding to open the product data management to add manually styles. The new version now supports the creation of SKUs, allowing customer to migrate critical data from the SAP interface and not using the standard DTW. In the same process the user can add the styles and generate all skus.

NOTE: All features explain on this manual is from AFS 43.53.1 and on

1.1 Steps To Add manually:

You can create a Styles and SKUs from the Quick Style Creation window form

1.2 Steps for Excel template

1. Excel file

- Column A: Stylecode. It must be unique
- Column B: Style description
- Column C: Foreign description
- Column D: Product line
- Column E: Scale code
- Column F: Color code (multiple colors are separated by colon plus space ", ") (ej: BLU, BCK)
- Column G: Variable code (multiple variables are separated by colon plus space ", ")
- Column H: Season code
- Column I: Collection code
- Column J: Subcollection code
- Column K: Brand code
- Column L: af_segmentation. Apparel internal code. It cannot be blank
- Column M: Sap Item Group. It cannot be blank
- Column N: Division code
- Column O: Year code
- Column P: Vendor code
- Column Q: WareHouse code. It cannot be blank
- Column R: Customer code
- Column S: Price list number code
- Column T: Currency code
- Column U: Price
- Column V: Image. Leave it blank (**see Image Path 2.3)
- Column W: Country (ie. Argentina)
- Column X: Product Group code
- Column Y: Estatus code
- Column AA: Comments
- Column AB, AC; etc. UDFs (ie. U_ARGNS_PCKTYPE)

Style Code	Style Description	Foreign Description	Product Line	Scale	Color (separated by coma ",")	Variable	Season	Collection	Subcollection	Brand	Segmentation	SAP Item Group	Division	Year	Vendor	Customer	Warehouse	Price
TestQSC1	test Quick Style Creation 1	1212	Urbana	C_005_C_002		All	Verano			AllStart	1	100	Woman	2019		01	4	
TestQSC2	test Quick Style Creation 2	1212	Urbana	C_005_C_003		All	Verano			AllStart	1	100	Woman	2019		01	4	
TestQSC3	test Quick Style Creation 3	1212	Urbana	C_005_C_002		All	Verano			AllStart	1	100	Woman	2019		01	4	
TestQSC4	test Quick Style Creation 4	1212	Urbana	C_005_C_003		All	Verano			AllStart	1	100	Woman	2019		01	4	
TestQSC5	test Quick Style Creation 5	1212	Urbana	C_005_C_002		All	Verano			AllStart	1	100	Woman	2019		01	4	

Note: To avoid errors values must exist in DB

2. Quick style creation

2.1. Select Excel file

2.2. Import from Excel Bottom

2.3. Image Path, the user will select a path where images are stored

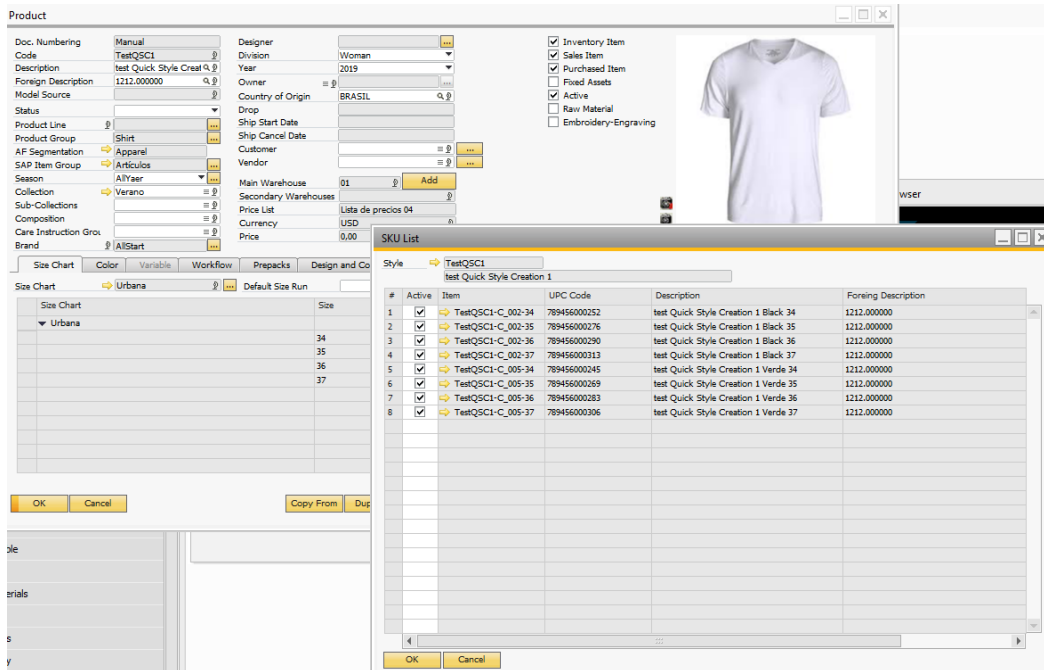
The system will automatically match the images to the corresponding Styles according to the images names at the moment of the Styles creation. The main image (the one displayed when the PDM is opened), will be named exactly the same as the Style Code + a suffix "-0". If the Style has secondary images (the ones displayed after navigating in the PDM's images), the image name will be the Style Code + a suffix "-1". For example: style code TestQSC1 will have two images. TestQSC1-0.jpg and TestQSC1-1.jpg.

2.4. Create the styles – When the Styles are created, it shows the following message: Styles Process OK

2.5. Generate the Skus - styles – When the SKUs are created, it shows the following message: Items Created Successfully

Lin...	Created	Style Code	Style Description	Foreign Desc	Produ...	SAP It...	Scale	Segmentation	Color	Variable	Season	Collec...	Sub...	Brand	Division	Year	Ware...	C	Price List
2	<input type="checkbox"/>	TestQSC1	test Quick Style Creation 1	1212.000000			Urbana	Apparel	C_005_C_002	AllYear	Verano			AllStart	Woman	2019	01		Lista de precio
3	<input type="checkbox"/>	TestQSC2	test Quick Style Creation 2	1212.000000			Urbana	Apparel	C_005_C_003	AllYear	Verano			AllStart	Woman	2019	01		Lista de precio
4	<input type="checkbox"/>	TestQSC3	test Quick Style Creation 3	1212.000000			Urbana	Apparel	C_005_C_002	AllYear	Verano			AllStart	Woman	2019	01		Lista de precio
5	<input type="checkbox"/>	TestQSC4	test Quick Style Creation 4	1212.000000			Urbana	Apparel	C_005_C_003	AllYear	Verano			AllStart	Woman	2019	01		Lista de precio
6	<input type="checkbox"/>	TestQSC5	test Quick Style Creation 5	1212.000000			Urbana	Apparel	C_005_C_002	AllYear	Verano			AllStart	Woman	2019	01		Lista de precio

The result



Prices for multiple price list

Prices for multiple price list will be defined after the Styles creation and before SKUs creation (Create Styles and Generate SKUs buttons)

1.3 Quick Style Multiple Prices

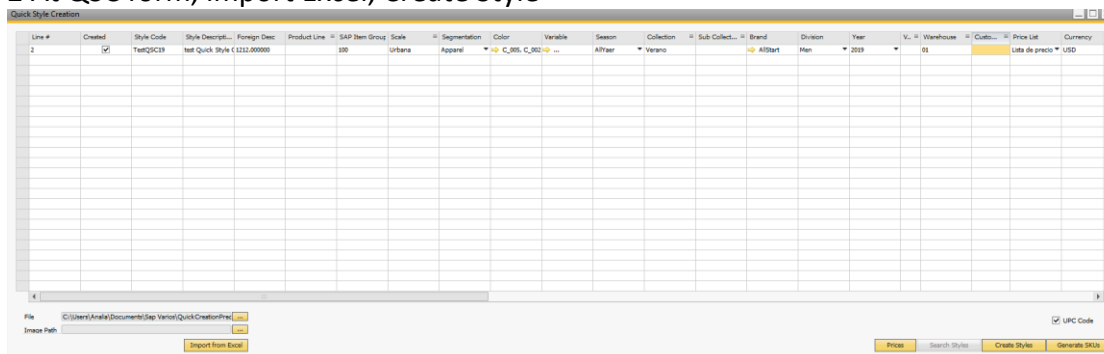
In the Quick Style form, there is a button named **Multiple Prices**. Once the user clicks on it, a new form would be displayed: **Quick Style Multiple Prices (QSMP)**

Steps

1 Excel file

Style Code	Style Description	Foreign Description	Product Line	Scale	Color (separated by coma ",")	Variable	Season	Collection	Sub collect	Brand	Segmentation	SAP Item Group	Division	Year	Warehouse	Price List N
TestQSC11	test Quick Style Creation 1	1212 shirt	Urbana	C_005, C_002		All	Verano	AllStart			1	100	Men	2019	01	1

2 At QSC form, import Excel, Create Style



3 Prices bottom, add currency and prices, OK bottom

Quick Style Multiple Prices

PL1 Lista de precios PL2 VIP2 PL3 Lista de precios

Código de p...	Código de c...	Precio 1	Moneda 1	Precio 2	Moneda 2	Precio 3	Moneda 3
TestQSC19	C_005	1,00	USD	2,00	USD	3,00	USD
TestQSC19	C_002	1,00	USD	2,00	USD	3,00	USD

OK

4 Generate SKUs

The SKUs are generated with 3 different price list and price:

Datos maestros de artículo

Número de artículo: Manual TestQSC19-C_005-34 Artículo de inventario

Descripción test Quick Style Creation 1 Verde Escala urbana 34 Artículo venta

Nombre extranjero 1212.000000 Artículo de compra

Clase de artículo Artículos

Grupo de artículos Artículos

Grupo unid. de medida Manual Código de barras 1234567817

Lista de precios VIP Precio por unidad Moneda prim: 1,00 USD

Datos maestros de artículo

Número de artículo: Manual TestQSC19-C_005-34 Artículo de inventario

Descripción test Quick Style Creation 1 Verde Escala urbana 34 Artículo venta

Nombre extranjero 1212.000000 Artículo de compra

Clase de artículo Artículos

Grupo de artículos Artículos

Grupo unid. de medida Manual Código de barras 1234567817

Lista de precios Lista de precios 01 Precio por unidad Moneda prim: 3,00 USD

Model TestQSC19

Datos maestros de artículo

Número de artículo: Manual TestQSC19-C_005-34 Artículo de inventario

Descripción test Quick Style Creation 1 Verde Escala urbana 34 Artículo venta

Nombre extranjero 1212.000000 Artículo de compra

Clase de artículo Artículos

Grupo de artículos Artículos

Grupo unid. de medida Manual Código de barras 1234567817

Lista de precios VIP2 Precio por unidad Moneda prim: 2,00 USD

Model TestQSC19

S... Datos de co... Datos de v... Datos de inve... Datos de planific... Datos de produ... Propie... Comen... A... Produ...

Sujeto a retención de impuesto Código RI permitido

Sujeto a impuesto

Impuesto indirecto

No aplicar grupos de descuento

Fabricante - Ningún fabricante -

ID adicional

Forma de envío

Números de serie y de lote

Artículo gestionado por Ning.

Clasificación de artículos para impuestos

Servicio Material

COT Code

Código MTX

Activo Desde Hasta Comentarios

Inactivo

Avanzado

2 Quick style creation Optimized

2.1 Steps To Add manually:

You can create a Styles and SKUs from the Quick Style Creation window form

2.2 Steps for Excel template

Excel File

- Column A: Stylecode. It must be unique
- Column B: Style description
- Column C: Foreign description
- Column D: Product line
- Column E: Scale code
- Column F: Color code (multiple colors are separated by colon plus space ", ") (ej: BLU, BCK)
- Column G: Variable code
- Column H: Season code
- Column I: Collection code
- Column J: Subcollection code
- Column K: Brand code
- Column L: af_segmentation. Apparel internal code. It cannot be blank
- Column M: Sap Item Group. It cannot be blank
- Column N: Division code
- Column O: Year code
- Column P: Vendor code
- Column Q: Customer code
- Column R: WareHouse code. It cannot be blank
- Column S: Price list number code
- Column T: Currency code
- Column U: Price
- Column V: Image. Leave it blank
- Column W: Country (ie. Argentina)
- Column X: Product Group code
- Column Y, Z: etc. UDFs (ie. U_ARGNS_PCKTYPE)

Quick style creation

- Select Excel file
- Import from Excel Bottom
- Create the styles – When the Styles are created, it shows the following message: Styles Process OK
- Generate the Skus - styles – When the SKUs are created, it shows time taken to Create Items Successfully

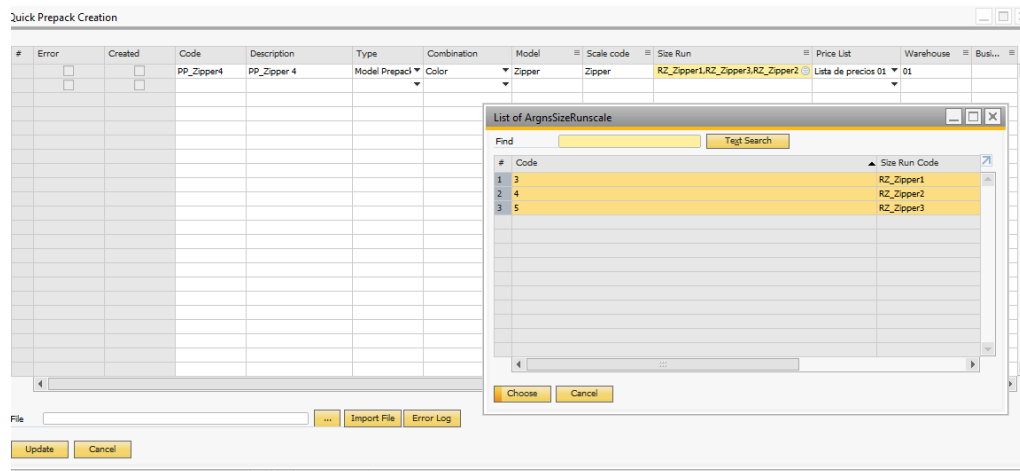
3 Quick Prepack creation

The quick PrePack creation serves as a simple tool to create Prepacks and to avoiding to open the product data management to add them manually.

The user can create multiple prepacks. The information can be added manually or based on an excel template.

3.1 Steps To Add manually:

You can create a Prepack from this window



And select more than a SizeRun for a style with the CTRL key

3.1 Steps for Excel template:

A. Excel file

1. Column A: complete Prepack code.
2. Column B: complete Prepack description
3. Column C: complete **M** (Prepack type).
4. Column D: complete C (Color).
5. Column E: complete Style code. ()
6. Column F: complete Scale code.
7. Column G: complete RunSize code.
8. Column H: complete PriceList code.
9. Column I: complete WareHouse code.
10. Column J: complete customer code.

	A	B	C	D	E	F	G	H	I	J	K	L
	PrePack Code	Prepack Description	Prepack type	Combination	Style Code	Scale	RunSize code	Price List Number	Warehouse	Customer		
2	PP_Zipper1	PP_Zipper 1 unidad	M	C	Zipper	Zipper	RZ_Zipper1	1 01				
3	PP_Zipper2	PP_Zipper 2 unidad	M	C	Zipper	Zipper	RZ_Zipper2	1 01				
4	PP_Zipper3	PP_Zipper 3 unidad	M	C	Zipper	Zipper	RZ_Zipper3	1 01				
5												
6												
7												

Note: To avoid errors values must exist and the Style must have Sap Item Group

B. Quick Prepack creation

2.6. Select Excel file

2.7. Import from Excel Button

2.8. Update

2.9. You can see Error log if needed

#	Error	Created	Code	Description	Type	Combination	Model	Scale code	Size Run	Price List	Warehouse	Business Partner
	<input type="checkbox"/>	<input checked="" type="checkbox"/>	PP_Zipper1	PP_Zipper 1 unidad	Model Prepack	Color	Zipper	Zipper	RZ_Zipper1	Lista de precios 01	01	
	<input type="checkbox"/>	<input checked="" type="checkbox"/>	PP_Zipper2	PP_Zipper 2 unidad	Model Prepack	Color	Zipper	Zipper	RZ_Zipper2	Lista de precios 01	01	
	<input type="checkbox"/>	<input checked="" type="checkbox"/>	PP_Zipper3	PP_Zipper 3 unidad	Model Prepack	Color	Zipper	Zipper	RZ_Zipper3	Lista de precios 01	01	

File: D:\Analia\Documents\Sap Varios\QuickPrePackCreation MiBase.xlsx

Buttons: Cancel, Import File, Error Log, OK