

APPAREL & FOOTWEAR

Pattern

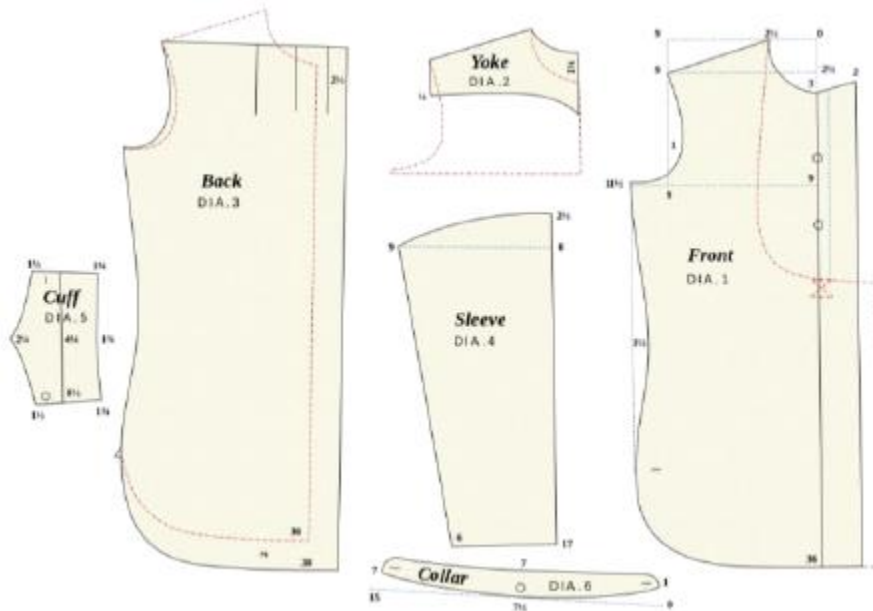


Contents

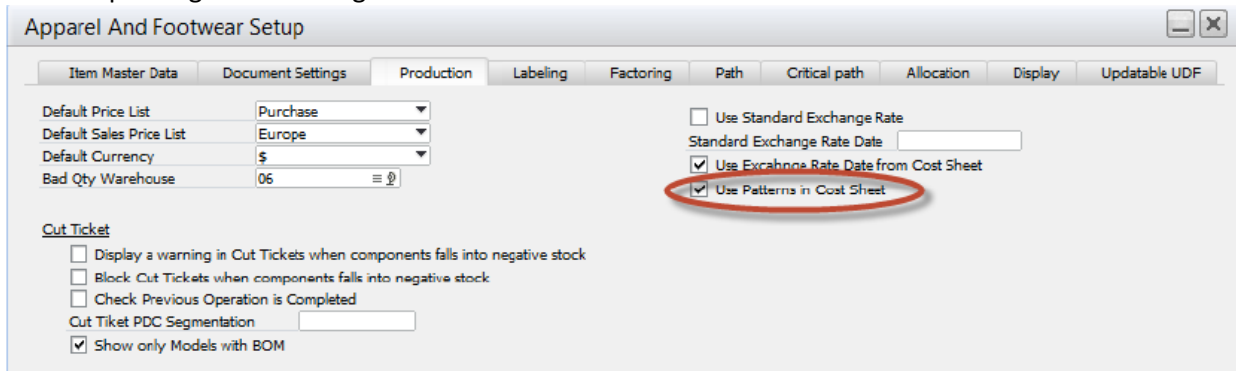
- New Pattern Module..... 2
- Create Patterns 3
- Create Pattern Templates 3
- Maintenance for customer working with patterns..... 5
- Pattern Master / Cost Sheet 7

New Pattern Module

In sewing and fashion design, a pattern is the template from which the parts of a garment are traced onto fabric before being cut out and assembled.

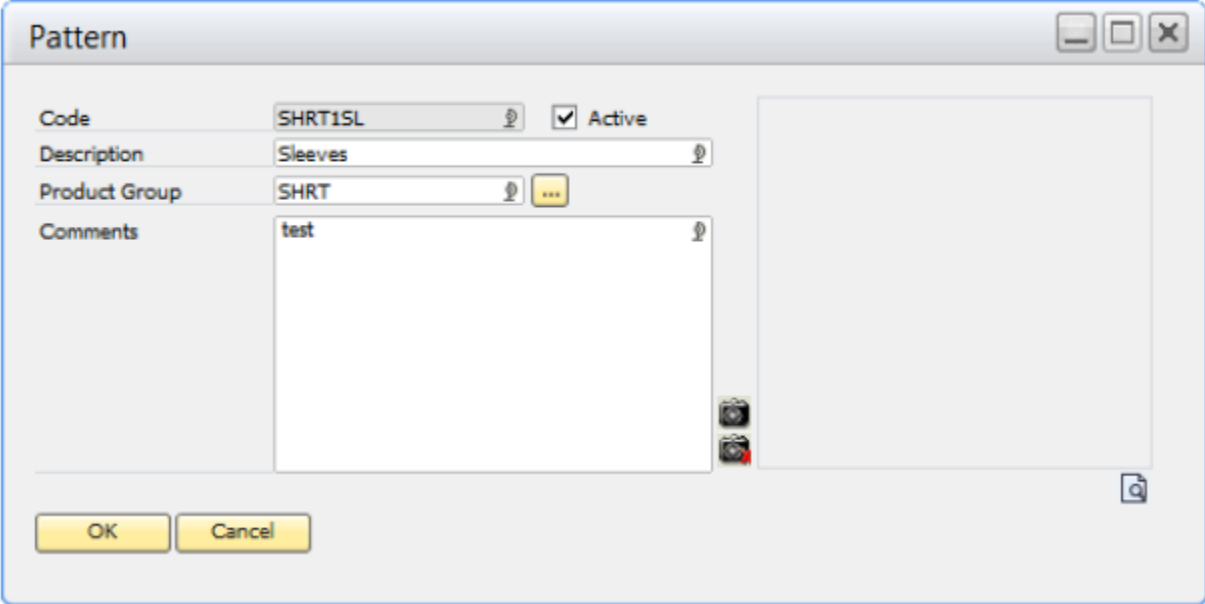


Now the user can add patterns to the cost sheet. In order to activate this module go to Administration → setup → general settings →



Create Patterns

In order to create a Pattern Go to Master Data → Pattern. Enter Code, description, product group (shirts, pants, etc) and a comment.



Pattern

Code: SHRT1SL Active

Description: Sleeves

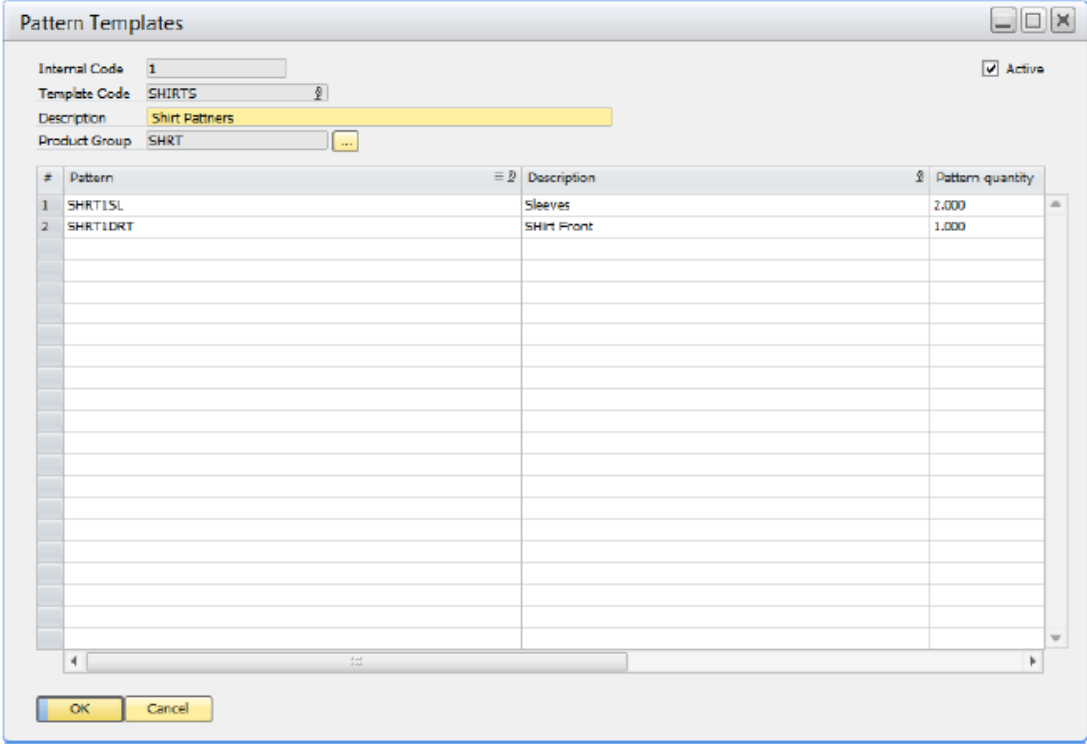
Product Group: SHRT

Comments: test

Buttons: OK, Cancel

Create Pattern Templates

To create a pattern template (to group various patterns) go to Master Data → Pattern Template. Enter code, description and product group. This is used to filter the same pattern types. At line level look for the individual pattern and enter the quantity.



Pattern Templates

Internal Code: 1 Active

Template Code: SHIRTS

Description: Shirt Pattners

Product Group: SHRT

#	Pattern	Description	Pattern quantity
1	SHRT1SL	Sleeves	2.000
2	SHRT1DRT	SHIRT Front	1.000

Buttons: OK, Cancel

Adding patterns to style cost sheets

To add a new pattern template and patterns open a new or existing costing sheet. Select a template and save. Then select the patterns to include in the garment using the select check box next to each pattern.

Cost Sheet

Model Code: MCD001
 Cost Sheet Internal Code: 105
 Cost Sheet Code: MCD001
 Currency: US Dollar
 Description: Hoja de costo fabricacion interna

Exchange Rate Date:
 Vendor:
 Name:
 Contact Person:

Materials | Operations | Sub Operations | Schemas | **Patterns** | Summary

Pattern Template: SHIRTS

#	Pattern Code	Description	Item No.	Item Desc.	Qty	UoM	Pattern Qty	Active
1	SHRT1SL	Sleeves			0.000		2.000	<input checked="" type="checkbox"/>
2	SHRT1DRT	SHIRT Front		RM003-016 - Tela Algodon Charcoal	0.000		1.000	<input checked="" type="checkbox"/>

Update Cancel

NOTE: only materials marked as ITEM TYPE F (Fabric) will be displayed to select in the pattern material selection

Product

Doc. Numbering: Manual
 Style Code: R001
 Description: Fabric Demo
 Design Code: Fabric Demo
 Product Line: Women
 AF Segmentation: Fabrics
 SAP Item Group: Items 2
 Season: A Winter 2015
 Brand: Nike

Designer: Mens
 Year: 2014
 Country of Origin:
 Drop:
 Drop Cancel Date:
 Customer:
 Vendor:
 Main Warehouse: 01
 Secondary Warehouse:
 Price List: Pur
 Currency: \$
 Price: 3.00

Inventory Item
 Sales Item
 Purchased Item
 Fixed Assets
 Active
 Raw Material
 Embroidery/Engraving

Item Master Apparel And Footwear

Description: Fabric Demo
 Foreign Description: Fabric Demo
 Item Type: Items 2
 Item Group: Manual
 UoM Group: Purchase
 Price List:
 Currency: US Dollar
 Unit Price: 3

Product Line: WOM
 Operation: No
 Available to Send Out: No
 Product Collection:
 Product Sub Collection:
 Product Composition:
 Product Simbolk Group:
 Product Brand: Nike
 Raw Material: Yes
 Standard Allowance Time: 0
 Production Resource:

Temporal: Active: Y
 Model Group: INTS
 Model Type:
 Product Line Code: WOM
 Operation: No
 Available to Send Out: No

Internal Code:
 Exact Picking?: Yes
 Serial Batch?: No
 Manual Picking?: No
 Use multiple nro Serie: No
 Seconds: n
 Item Type: Fabric

OK Cancel Copy From

Maintenance for customer working with patterns

Companies running the current pattern module need to delete de PATTERN UDO.

User-Defined Object Registration

Selecting the Registration Mode

Add a New Object
 Update an existing object
 Unregister an existing object
 Delete an existing object

Code	Name	Table
20	ARGNS_EM_EN ArgnsEmbroideryEngraving	ARGNS_EM_EN
21	ARGNS_FACT ArgnsFactor	ARGNS_FACTOR
22	ARGNS_INSC ArgnsInstructionChart	ARGNS_INSCHEAT
23	ARGNS_INST ArgnsInstruction	ARGNS_INSTRUCTION
24	ARGNS_LOGO ArgnsLogo	ARGNS_LOGO
25	ARGNS_MAT ArgnsMatDet	ARGNS_MAT_DET
26	ARGNS_MODEL ArgnsModel	ARGNS_MODEL
27	ARGNS_MOOD ArgnsMoodBoard	ARGNS_MOODBOARD
28	ARGNS_OPER ArgnsOperationsTemplate	ARGNS_OPERTEMPLATE
29	ARGNS_OTBC ArgnsOTBCategories	ARGNS_OTBCATEG
30	ARGNS_OTBC ArgnsOTBConfig	ARGNS_OTBCONFIG
31	ARGNS_PATT ArgnsPattern	ARGNS_PATTERN
32	ARGNS_PLANN ArgnsPlanning	ARGNS_PLANNING
33	ARGNS_POMT ArgnsPOMTemplate	ARGNS_POMTEMPLATE
34	ARGNS_PREP ArgnsPrepack	ARGNS_PREPACK
35	ARGNS_PROD ArgnsProd.DataCollection	ARGNS_PROD_DATACOL
36	ARGNS_PROD ArgnsProductLine	ARGNS_PRODLINE
37	ARGNS_RANG ArgnsRangaPlan	ARGNS_RANGEP
38	ARGNS_RESO ArgnsResourceforProduction	ARGNS_RESOURCE
39	ARGNS_ROUT ArgnsRouting	ARGNS_ROUTING

Also delete the two tables in each database. After deleting object and tables exit and relogin to SAP B1. Run the update DB under the maintenance (Administration → setup → maintenance.)

User-Defined Tables - Setup

#	Table Name	Description
111	ARGNS_OTBITEMSLNS	Argentis OTB Items Lines
112	ARGNS_OTBMASTER	Argentis OTB Master
113	ARGNS_OTBWHS	Argentis OTB Whs
114	ARGNS_PATTEMP	Argns Pattern Template
115	ARGNS_PATTERN	Pattern Master
116	ARGNS_PLANNING	Argns Planning
117	ARGNS_POMS	Argns Point of Mensures
118	ARGNS_POMTEMDET	Argns POM Temp Lns Det.
119	ARGNS_POMTEMPLATE	Argns POM Template
120	ARGNS_POMTEMPLNS	Argns POM Template Lns
121	ARGNS_PREPACK	Argns Prepack
122	ARGNS_PREPACKLNS	Argns Prepack Lines
123	ARGNS_PRIORITY	Argns Priority

OK Cancel

Finally after updating the database link the new child table to the cost sheet object
User-Defined Object Registration

Selecting the Registration Mode

- Add a New Object
- Update an existing object
- Unregister an existing object
- Delete an existing object

	Code	Name	Table
1	ARGNS_ALLO	ArgentisAllocation	ARGNS_ALLOCH
2	ARGNS_ALLO	ArgnsAllocationSetup	ARGNS_ALLOC_SETUP
3	ARGNS_ALLO	ArgentisAllocationTransfer	ARGNS_ALLOCTH
4	ARGNS_AMBI	ArgnsAmbients	ARGNS_AMBIENT
5	ARGNS_APPT	ArgnsApparelAndTextilGroups	ARGNS_APPTEXGRPS
6	ARGNS_APRT	ApparelAndTextilSetup	ARGNS_APRTX_SETUP
7	ARGNS_BPDE	ArgnsBPDepartments	ARGNS_BPDEPTS
8	ARGNS_CCHA	ArgnsColorChart	ARGNS_CCHART
9	ARGNS_COLL	ArgnsCollection	ARGNS_COLLECTION
10	ARGNS_COLO	ArgnsColor	ARGNS_COLOR
11	ARGNS_COMF	ArgnsComposition	ARGNS_COMPOSITION
12	ARGNS_COST	ArgnsCostSheet	ARGNS_COST_SHEET
13	ARGNS_CRPA	ArgnsCriticalPath	ARGNS_CRPATH
14	ARGNS_CRSE	ArgnsCrystalReportSetup	ARGNS_CRSETUP
15	ARGNS_CUTT	ArgnsCutTicket	ARGNS_CUTTIC
16	ARGNS_DESI	ArgnsDesignIntegrationTools	ARGNS_DESITool
17	ARGNS_DOCN	ArgnsDocumentNumber	ARGNS_DOCNUMBER
18	ARGNS_DROP	ArgnsDrop	ARGNS_DROP
19	ARGNS_EECO	ArgnsColorWay	ARGNS_EECOLORWAY
20	ARGNS_EM_EI	ArgnsEmbroideryEngraving	ARGNS_EM_EN

User-Defined Object Registration

Linking additional child user tables

	Object Name	Table Name	Table Description
1	<input checked="" type="checkbox"/> ARGNS_CS_MATERIALS	ARGNS_CS_MATERIALS	Argentis Cost Sheet Materials
2	<input checked="" type="checkbox"/> ARGNS_CS_OPERATIONS	ARGNS_CS_OPERATIONS	Argentis Cost Sheet Operations
3	<input checked="" type="checkbox"/> ARGNS_CS_SCHEMAS	ARGNS_CS_SCHEMAS	Argentis Cost Sheet Schemas
4	<input checked="" type="checkbox"/> ARGNS_CS_SUB_OPER	ARGNS_CS_SUB_OPER	Argentis Cost Sheet Sub Oper
5	<input checked="" type="checkbox"/> ARGNS_CS_PATTERNS	ARGNS_CS_PATTERNS	Argentis Cost Sheet Patterns
6	<input type="checkbox"/> ARGNS_MD_FACCESS	ARGNS_MD_FACCESS	Argentis Footwear Accessories
7	<input type="checkbox"/> ARGNS_MD_FDETAILS	ARGNS_MD_FDETAILS	Argentis Footwear Details
8	<input type="checkbox"/> ARGNS_MD_FPACKAGING	ARGNS_MD_FPACKAGING	Argentis Footwear Packaging
9	<input type="checkbox"/> ARGNS_MD_FPICTOGRAM	ARGNS_MD_FPICTOGRAM	Argentis Footwear Pictogram
10	<input type="checkbox"/> ARGNS_MD_PSRANGE	ARGNS_MD_PSRANGE	Argentis Footwear Size Range

Pattern Master / Cost Sheet

In order to track style patterns in costing sheet a new module has been added enhancing the product development module.

1. Define a Pattern

Go to Apparel & Footwear → Master Data → Patterns 34

Enter the pattern ID and Style group in order to filter patterns for the style selected.

2. Link the Pattern to the Materials in the Cost Sheet

Go to Apparel & Footwear → Master Data → Product Data Management and click on the Cost Sheet tab and open the cost sheet you want to have the patterns linked.

In the cost sheet the user can enter the fabric and pattern used, pattern quantity in order to calculate the total consumption of a fabric or similar raw material.

#	Item No.	Item Description	Quantity	Pattern Code	Pattern Qty	Co	CoGT	Semifinished	Color	UoM	Whse	Link Operation	Dis...
1	RM002-01G	Tela Polyester Grey	2,000	T1	1,000						03	OPCUT	
2	RM002-01G	Tela Polyester Grey	2,000	T	1,000						03		
3	RM002-102	Tela Polyester black	2,300	M1	2,000						03		