

Apparel & Footwear

Remove Duplicates

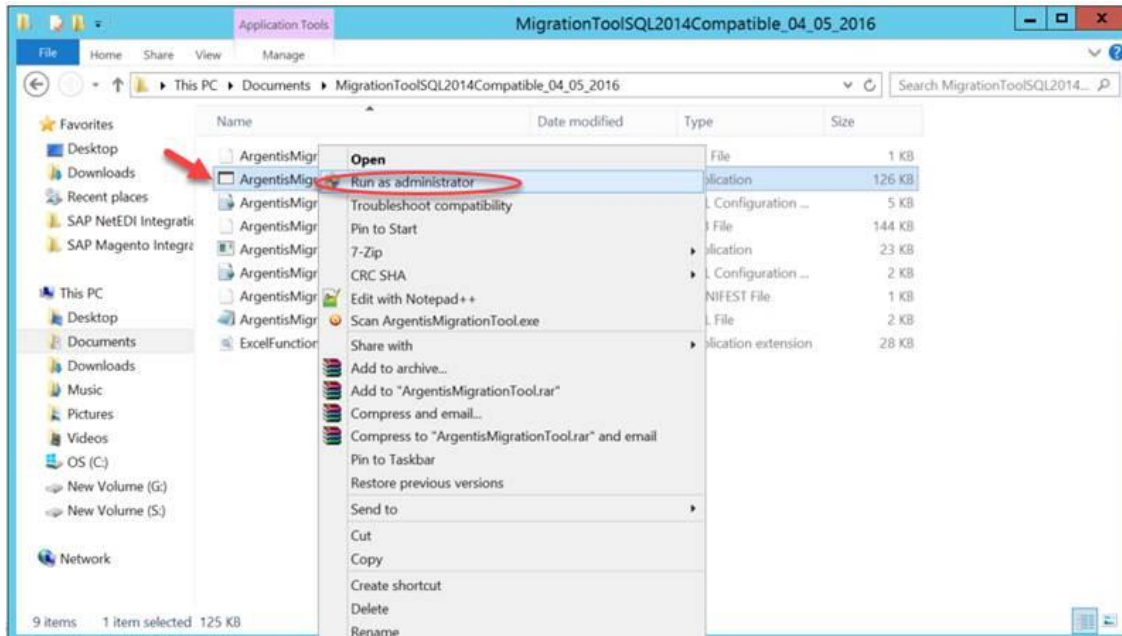
Contents

- 1.1 How to delete User Define Object UDO (ej style details) - Apparel and Footwear ...3
 - 1.1.1 Connect to a company3
 - 1.1.2 View-Delete data5
- 1.2 How to delete User Define Tables UDT (ej seasons) - Apparel and Footwear7

1.1 How to delete User Define Object UDO (ej style details) - Apparel and Footwear

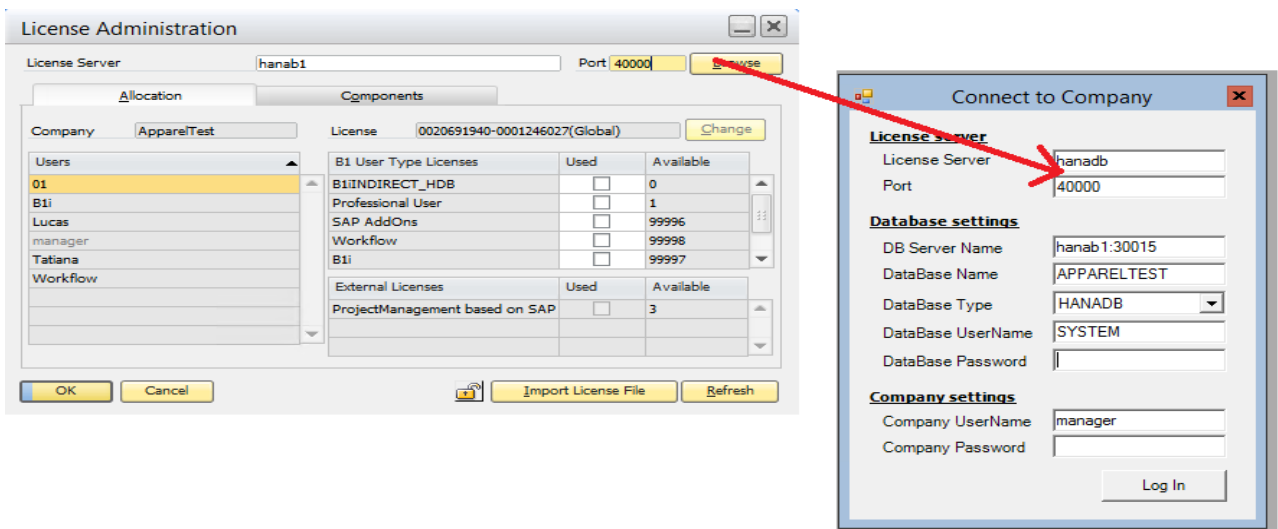
In order to delete duplicates or nulls values, open the Apparel & footwear Migration Tool from the installation package.

Run as administrator the file **ArgentisMigration.exe**

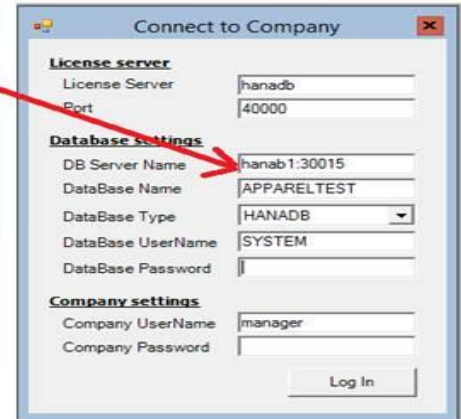


1.1.1 Connect to a company

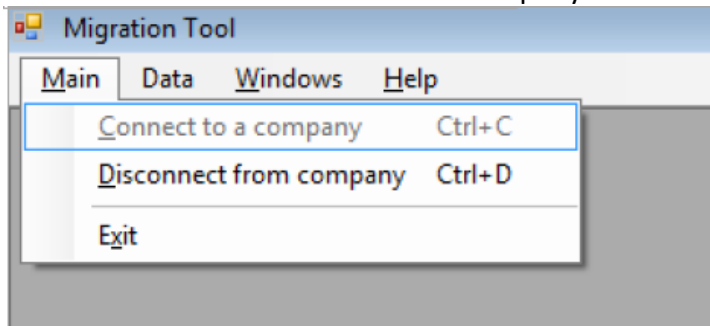
Verify the information of License server (Administracion → Licence → License administration)



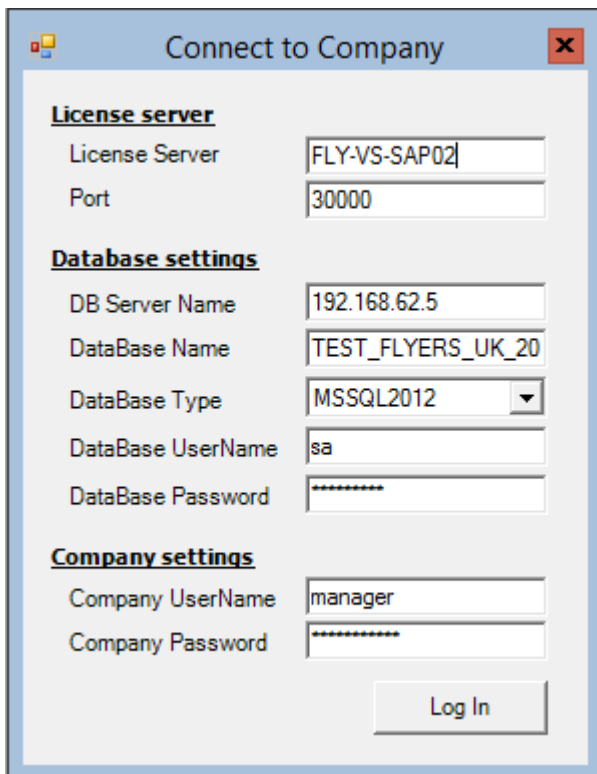
Verify the information of DB server name. Please add the port.



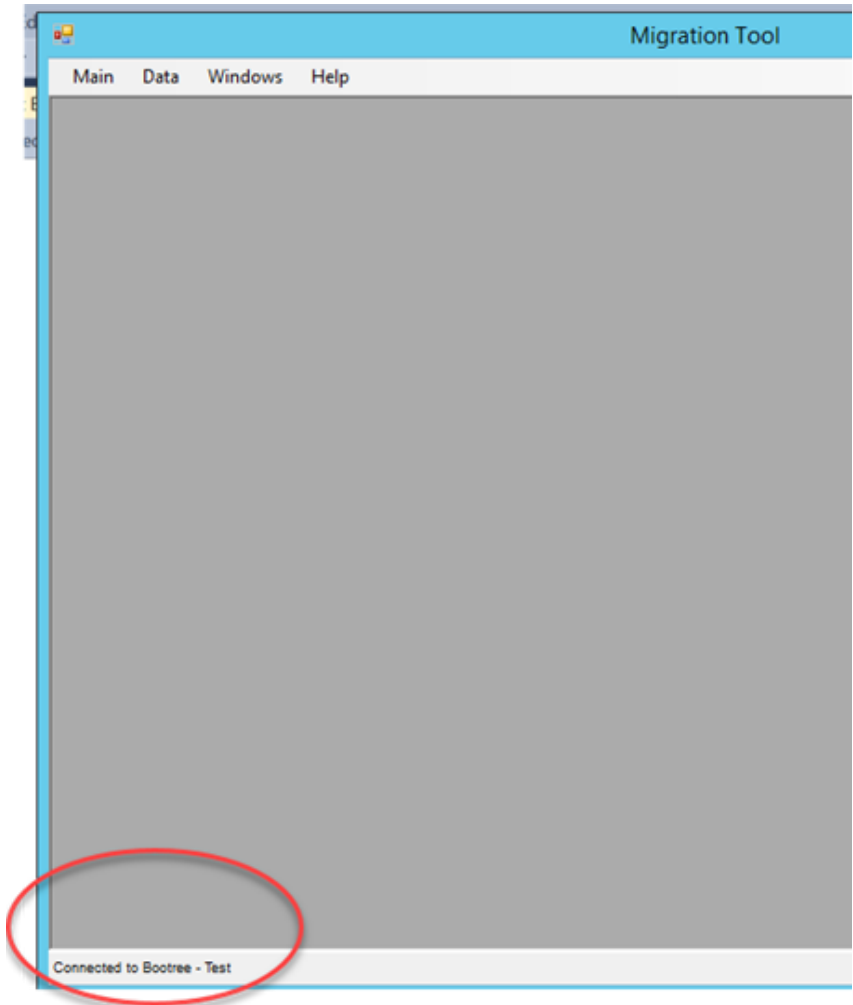
Go to Main → Connect to a company



Enter license and database server name, company database, user and password

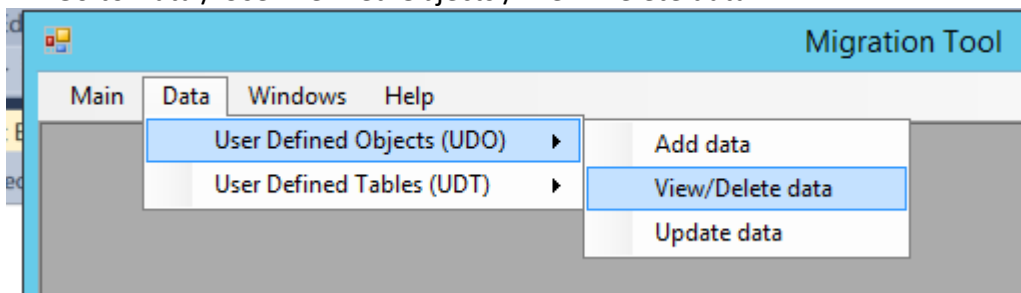


Once connected you can check this below

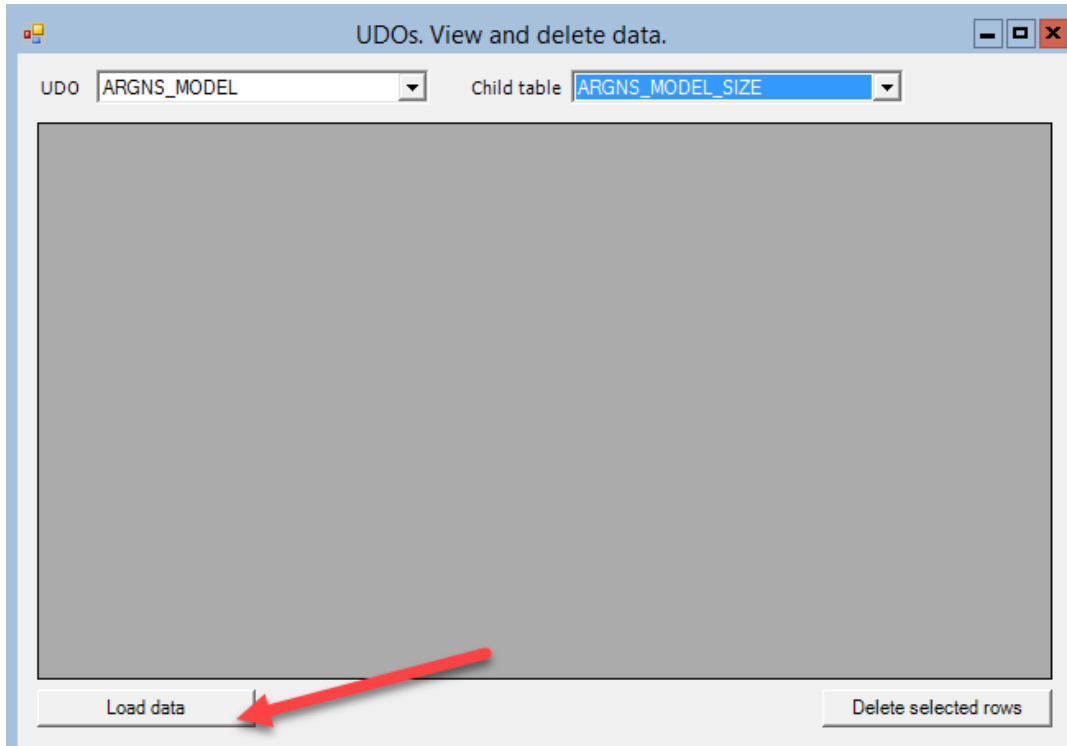


1.1.2 View-Delete data

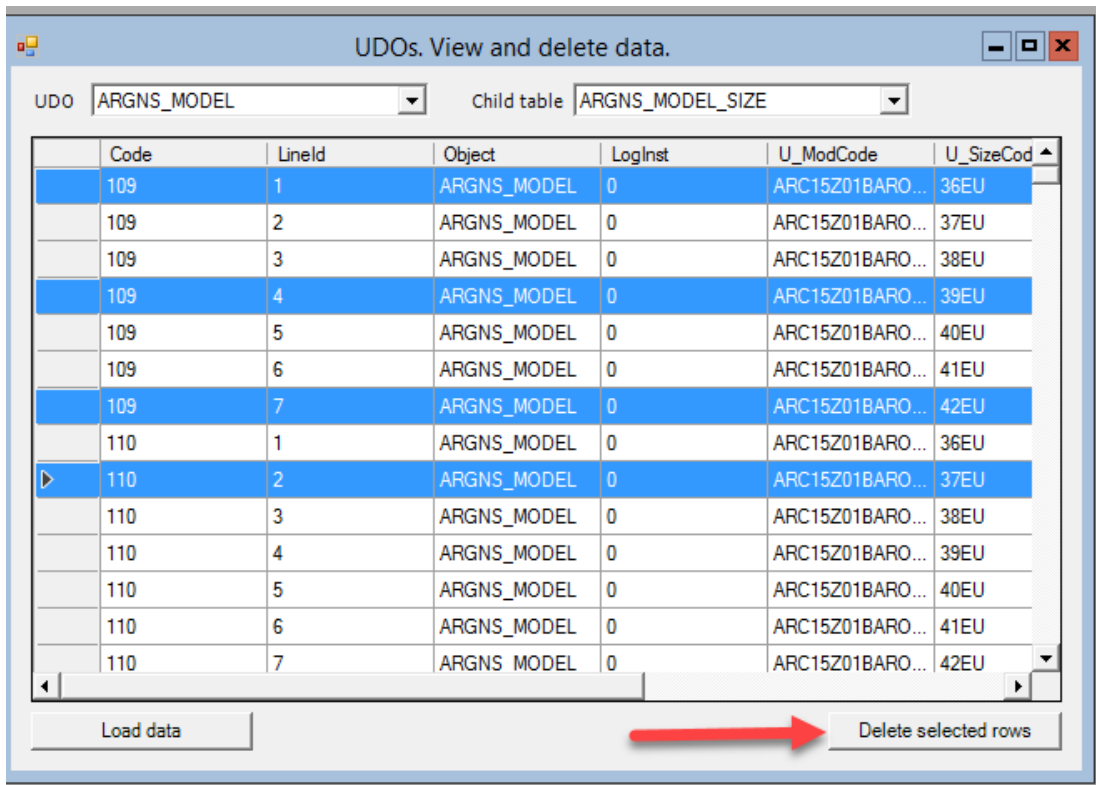
Go to Data / User Defined Objects / View-Delete data



Select the UDO and Child Tables, and then the option "Load data"



Select the rows to be deleted. And press option Delete selected rows.



Please note you will NOT have any confirmation pop-up, after you select this option the information will be deleted from the database.

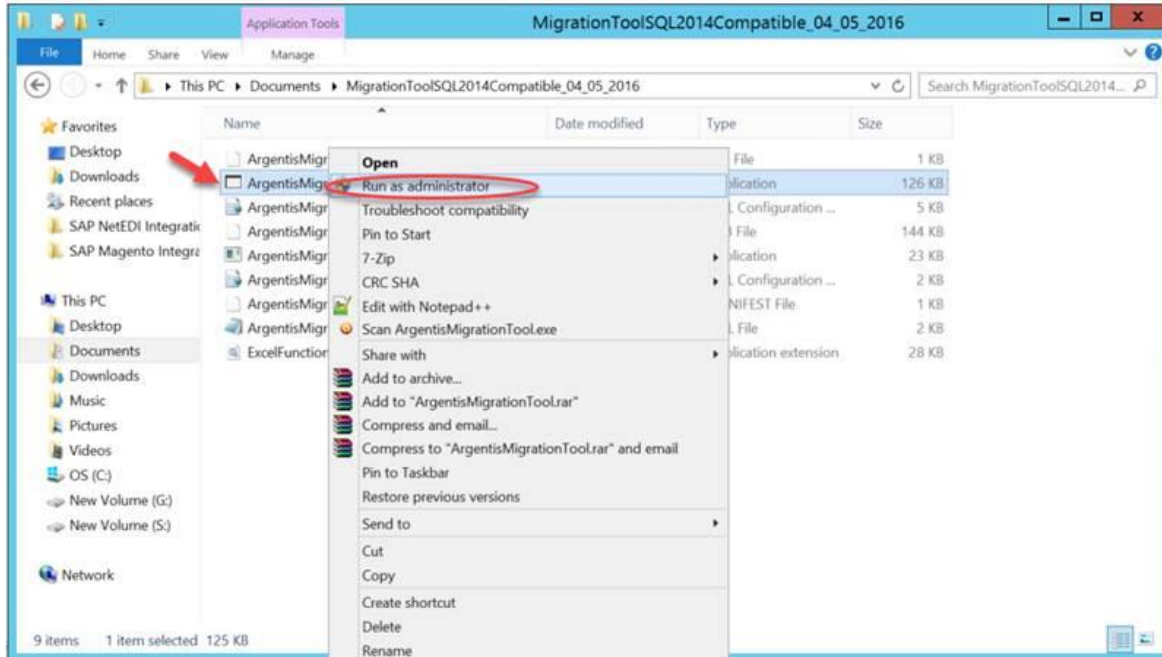
1.2 How to delete User Define Tables UDT (ej seasons) - Apparel and Footwear

In order to delete style details, open the Apparel & footwear Migration Tool from the installation package.

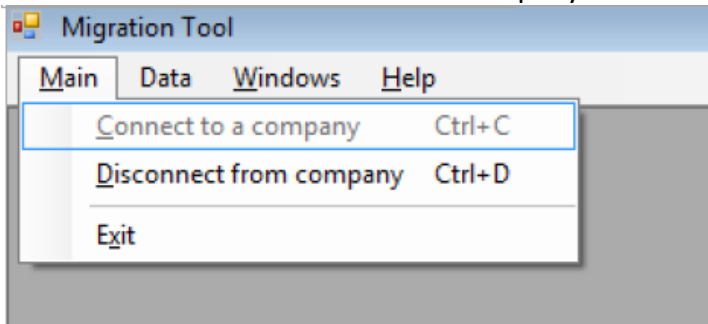
The migration tool is available in

C:\Users\b1user\Documents\MigrationToolSQL2014Compatible_04_05_2016

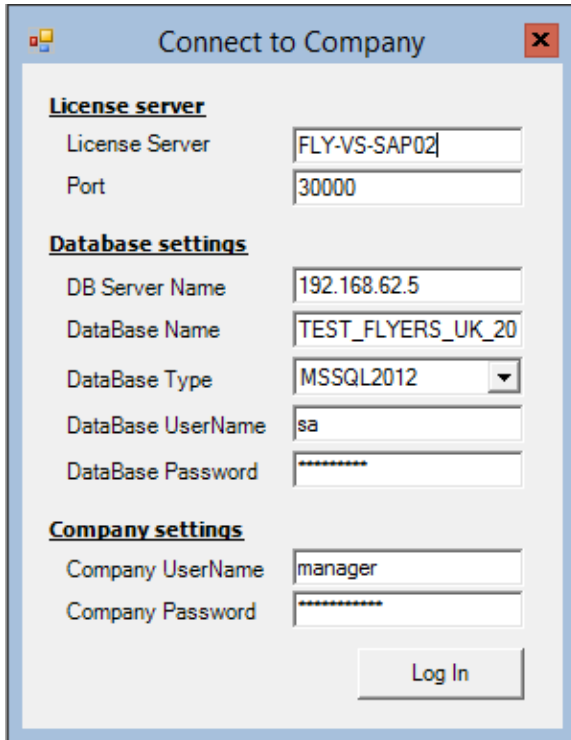
Run as administrator the file **ArgentisMigration.exe**



Go to Main → Connect to a company



Enter license and database server name, company database, user and password

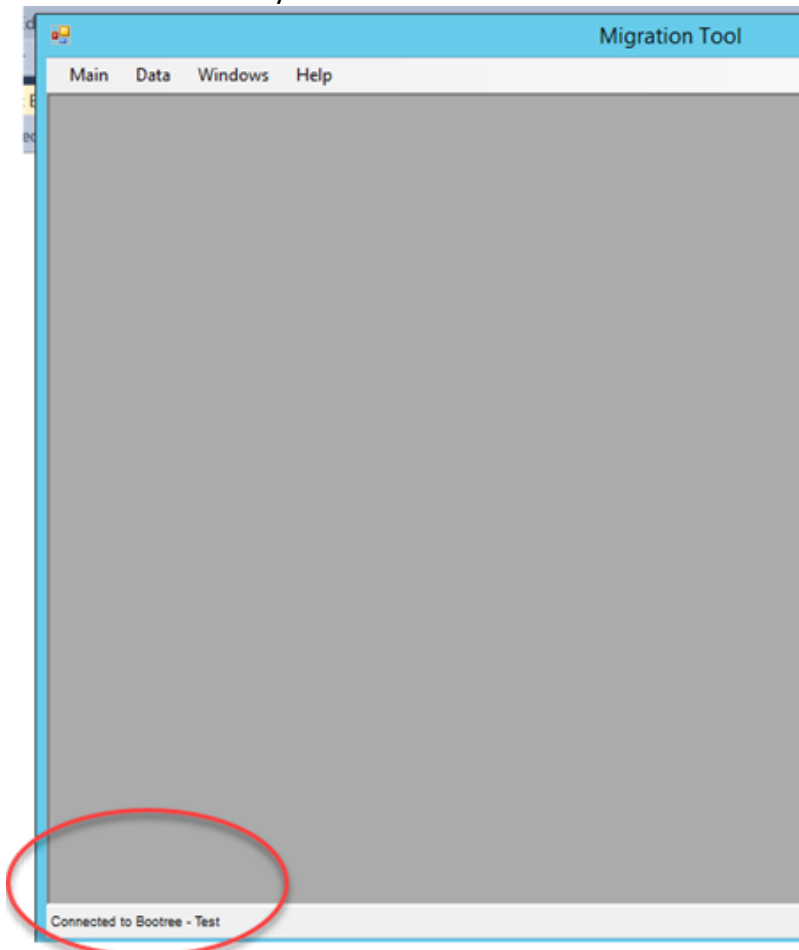


The screenshot shows a 'Connect to Company' dialog box with the following fields and values:

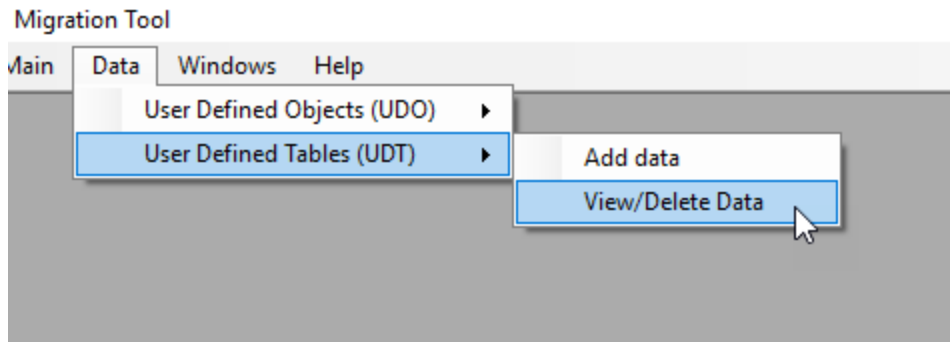
- License server**
 - License Server: FLY-VS-SAP02
 - Port: 30000
- Database settings**
 - DB Server Name: 192.168.62.5
 - DataBase Name: TEST_FLYERS_UK_20
 - DataBase Type: MSSQL2012
 - DataBase UserName: sa
 - DataBase Password: [masked]
- Company settings**
 - Company UserName: manager
 - Company Password: [masked]

A 'Log In' button is located at the bottom right of the dialog.

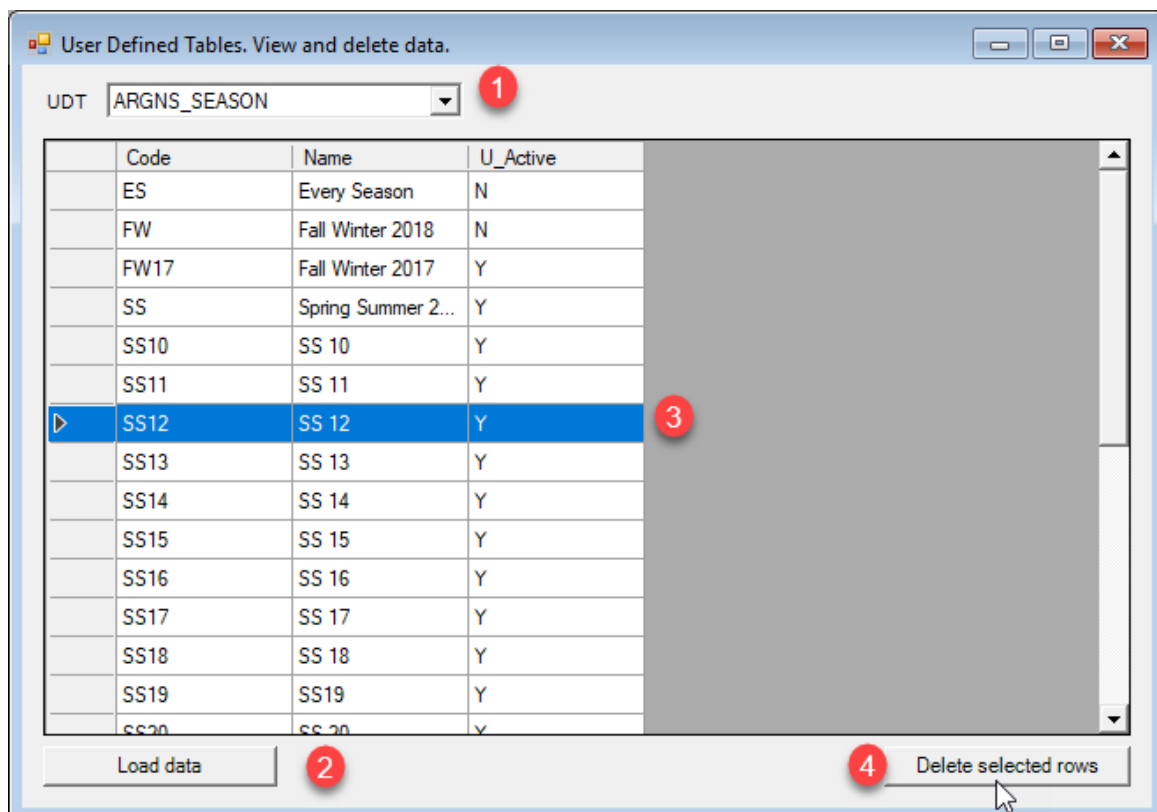
Once connected you can check this below



Go to Data / User Defined Tables / View-Delete data



1. Select the Season Table,
2. And then the option "Load data"



3. Select the rows to be deleted.
4. And press option Delete selected rows.

Please note you will NOT have any confirmation pop-up, after you select this option the information will be deleted from the database.