

# Apparel & Footwear

DTW - Data Migration of Model POM

Contents

- 1 INTRODUCTION ..... 3**
- 2 TEMPLATES ..... 3**
  - 2.1 Templates related to Model POM.....3**
    - 2.1.1 Template: ARGNS\_MODELPOM - ARGNS\_MODELPOM ..... 3
- 3 DATA IMPORT PROCESS..... 3**
  - 3.1 Excel Preparation for Model POM.....3**
- 4 CSV files import trough DTW–Model POM..... 4**

# 1 INTRODUCTION

This document contains the necessary information to prepare and execute data migration for Model POM using the DTW tool.

## 2 TEMPLATES

### 2.1 Templates related to Model POM

To import data related to Model POM the following Excel templates need to be completed:

ARGNS\_MODELPOH - ARGNS\_MODELPOH

#### 2.1.1 Template: ARGNS\_MODELPOH - ARGNS\_MODELPOH

This is the template that will hold the general information for each Model POM.

The relevant fields in this template are:

1. ParentKey: This is the SAP internal code defined in the code field of the ARGNS\_MODEL - ARGNS\_MODEL
2. LineNum: Leave blank. This field is automatically completed by DTW during the import process.
3. Code: This is the SAP internal code defined in the code field of the ARGNS\_MODEL - ARGNS\_MODEL template. Same as ParentKey
4. U\_POM: This is POM code defined in the U\_ARGNS\_POMS - U\_ARGNS\_POMS
5. U\_Desc: This is POM description defined in the U\_ARGNS\_POMS - U\_ARGNS\_POMS
6. U\_SizeCode: Size code belongs to the scale code defined in the ARGNS\_POMTEMPLATE - ARGNS\_POMTEMPLATE
7. U\_Value: Measurement value defined in the ARGNS\_POMTEMPLATE - ARGNS\_POMTEMPLNS
8. U\_TolPosit: Positive tolerance defined in the ARGNS\_POMTEMPLATE - ARGNS\_POMTEMPLNS
9. U\_TolNeg: Negative tolerance defined in the ARGNS\_POMTEMPLATE - ARGNS\_POMTEMPLNS
10. U\_QAPoint: 'Y' to select QA point 'N' to deselect QA point defined in the ARGNS\_POMTEMPLATE - ARGNS\_POMTEMPLNS
11. U\_SclPom: Scale code define in the ARGNS\_MODEL - ARGNS\_MODEL
12. U\_PomCode: POM code defined in the ARGNS\_POMTEMPLATE - ARGNS\_POMTEMPLATE

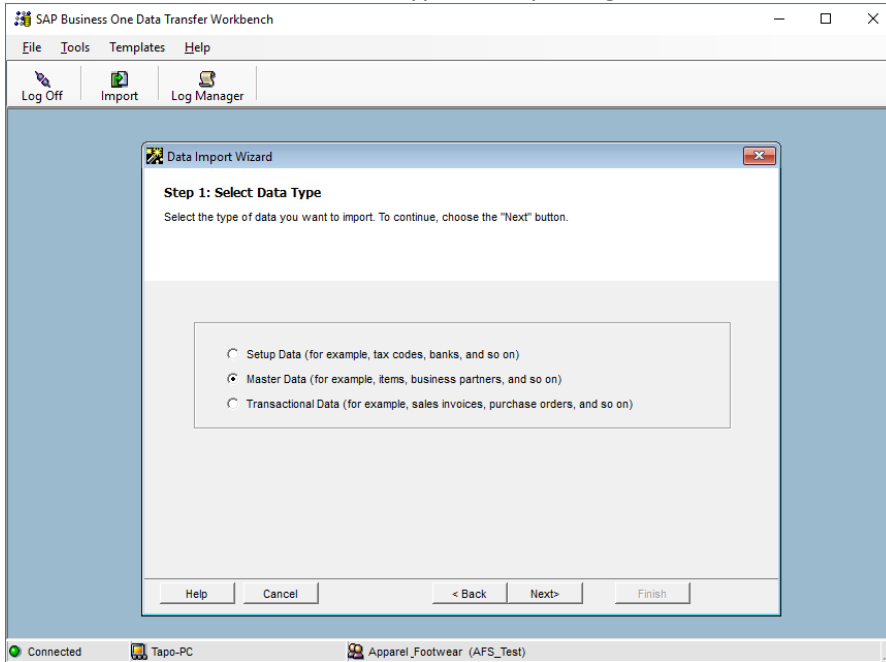
## 3 DATA IMPORT PROCESS

### 3.1 Excel Preparation for Model POM

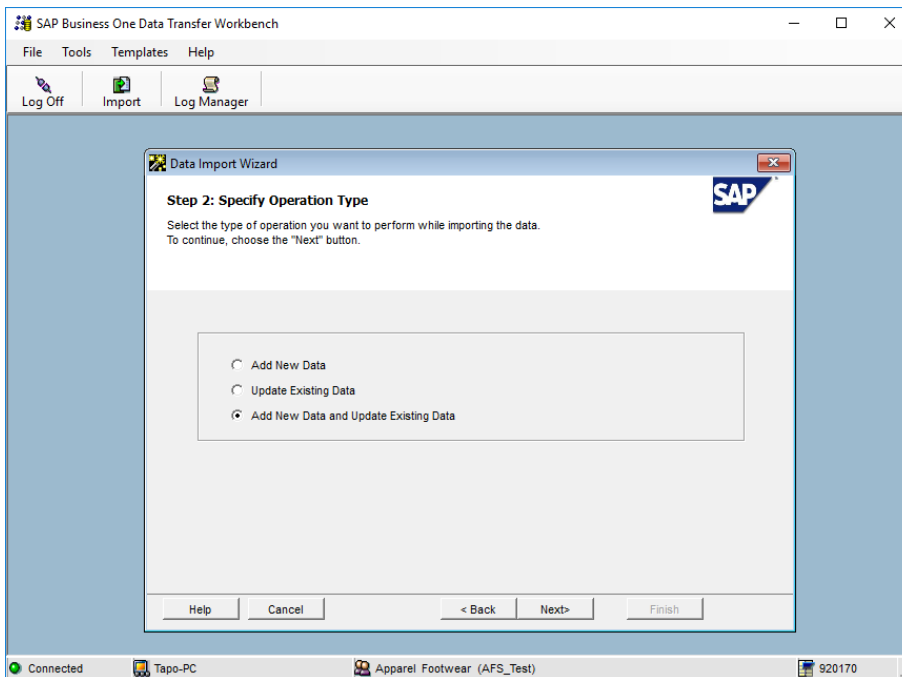
The screenshot shows an Excel spreadsheet with data for Model POM. The data is organized in columns: ParentKey, LineNum, Code, U\_POM, U\_Desc, U\_SizeCode, U\_Value, U\_TolPosit, U\_TolNeg, U\_QAPoint, U\_SclPom, and U\_PomCode. Red arrows point from the data rows to a dialog box titled 'Import Data'. The dialog box has fields for POM, Description, Tolerance, and QAPoint. The dialog box also has checkboxes for 'Create UIC Code' and 'Generate Data'.

#### 4 CSV files import trough DTW–Model POM

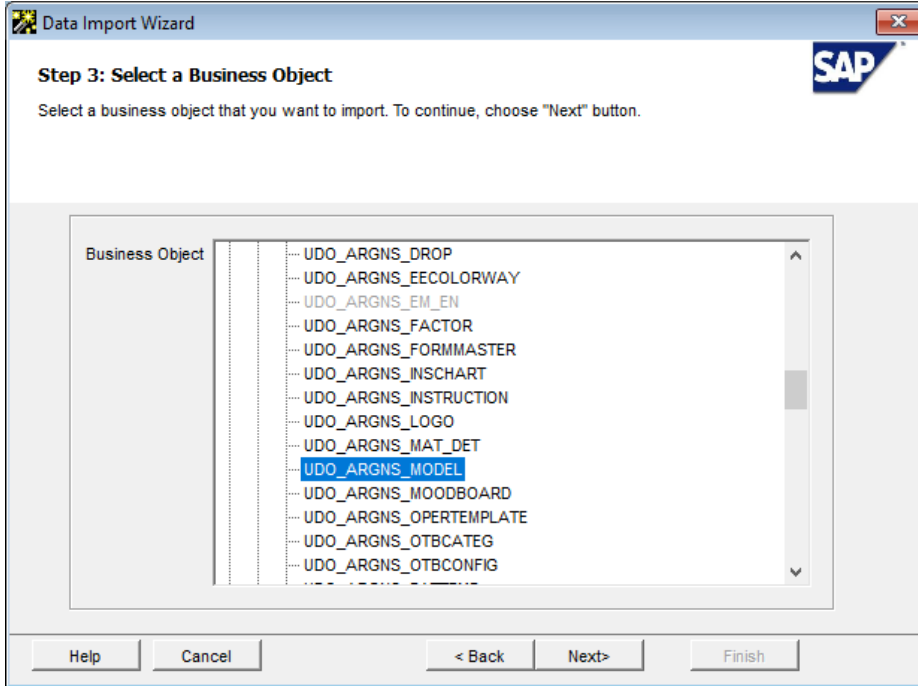
1. Click on the “Import” button to start the Data import wizard
2. Select master data as the data type for importing Model POM



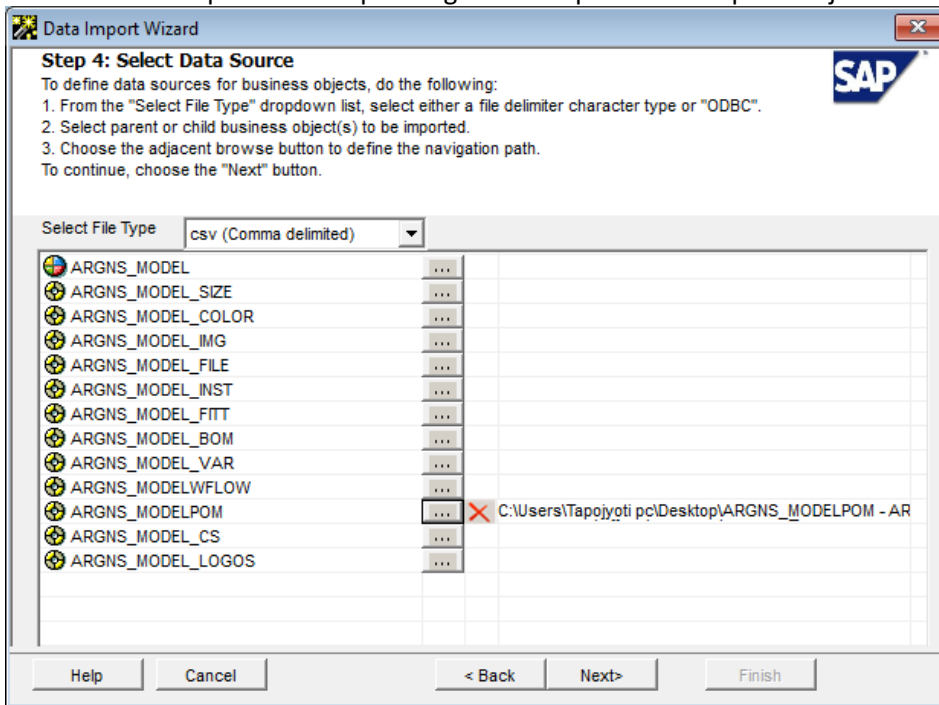
3. Select Add new data and update existing data as the operation type.



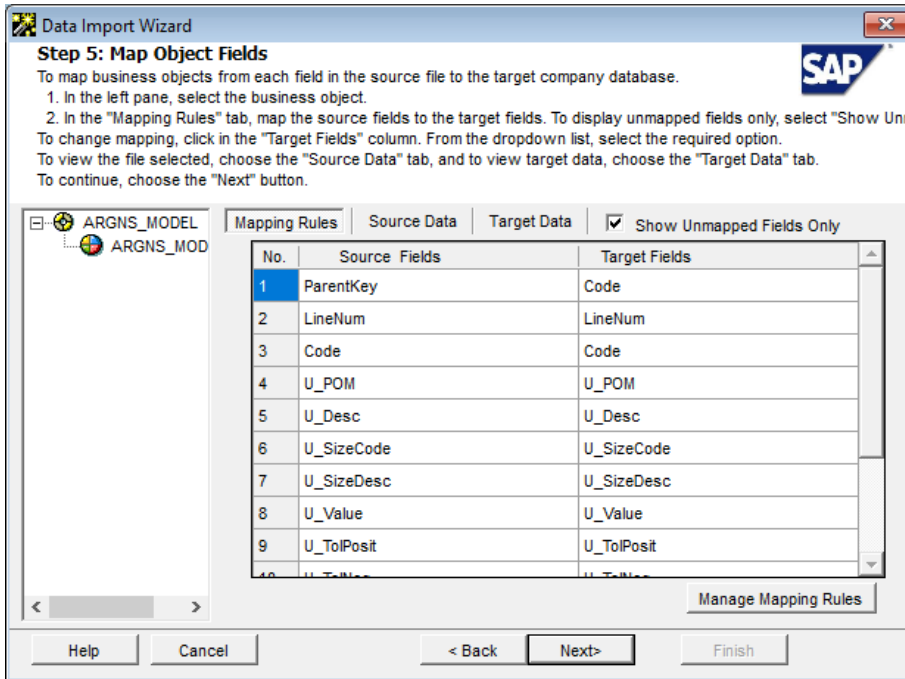
4. Search and select the UDO\_ARGNS\_MODEL object under the following path: User Defined Data > Object (UDO) > UDO\_ARGNS\_MODEL



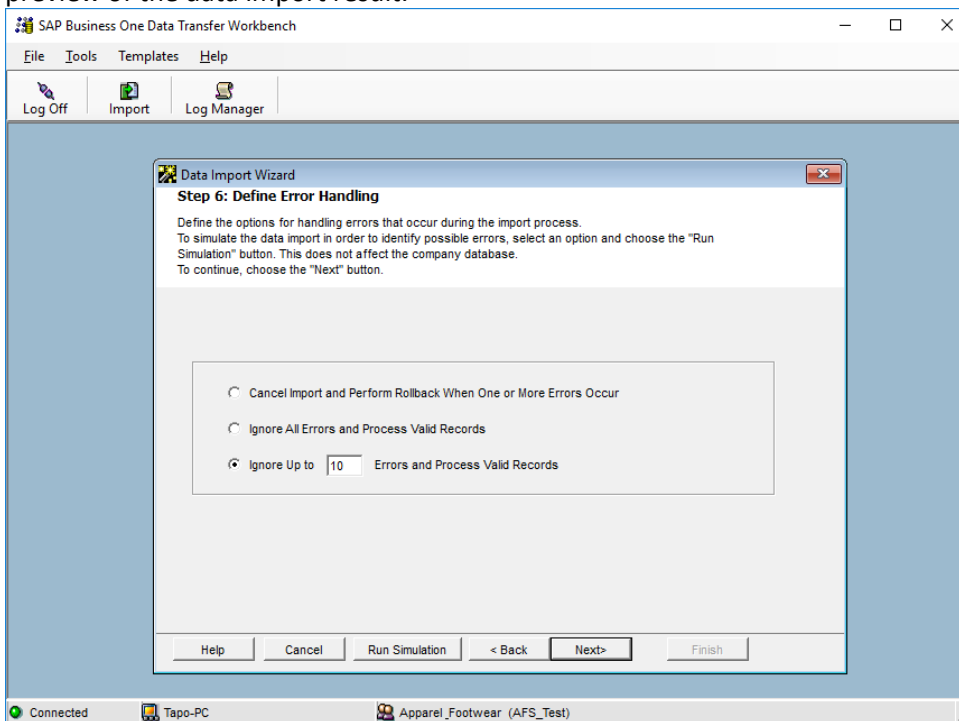
5. Select the templates corresponding to each operation template object.



6. Map object fields. This is a confirmation screen for the data mapping.



7. Define error handling. It is usually recommended to select the last option to prevent from processing the entire file if a certain number of errors are found. In this step it is usually recommended to run the simulation process (by clicking the Run Simulation button) to get a preview of the data import result.



8. Start importing data. If no errors were found in the simulation process, click on the Import button to start the actual data import process. Please note that this does not guarantee that the data imported is accurate and it must be checked within SAP to make sure that everything is being loaded the way it should.