

# AFS

## Crystal Reports Installation



- 1 ODBC Connection ..... 3
  - 1.1 SQL .....4
  - 1.2 HANA.....4
- 2 Download Crystal Files..... 5
- 3 SAP B1 Client Configuration ..... 5
- 4 AFS reports for SAP marketing documents ..... 6
  - 4.1 Reports for SAP Marketing Documents Configuration .....6

# Crystal Reports Installation Process

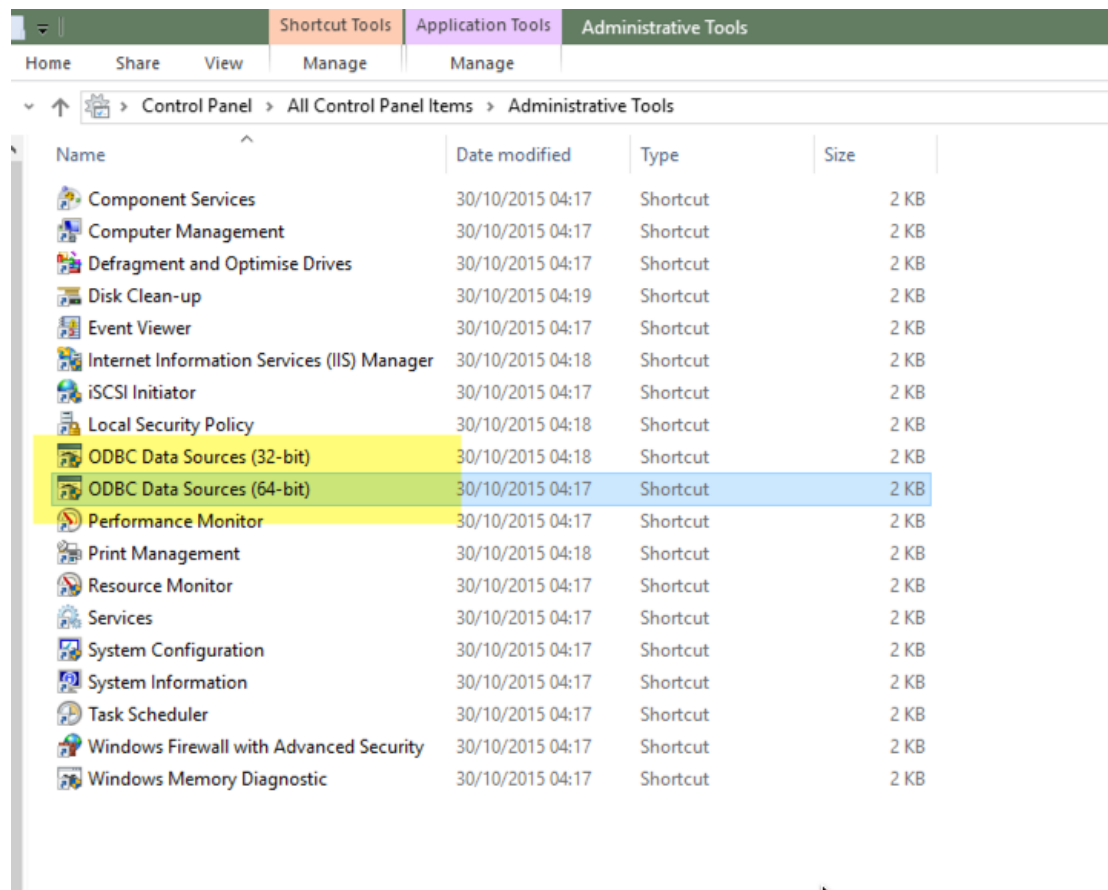
The following steps describes the installation process of the Crystal Reports in Apparel and Footwear. To install the Crystal Report of Apparel and Footwear please follow the steps:

## 1 ODBC Connection

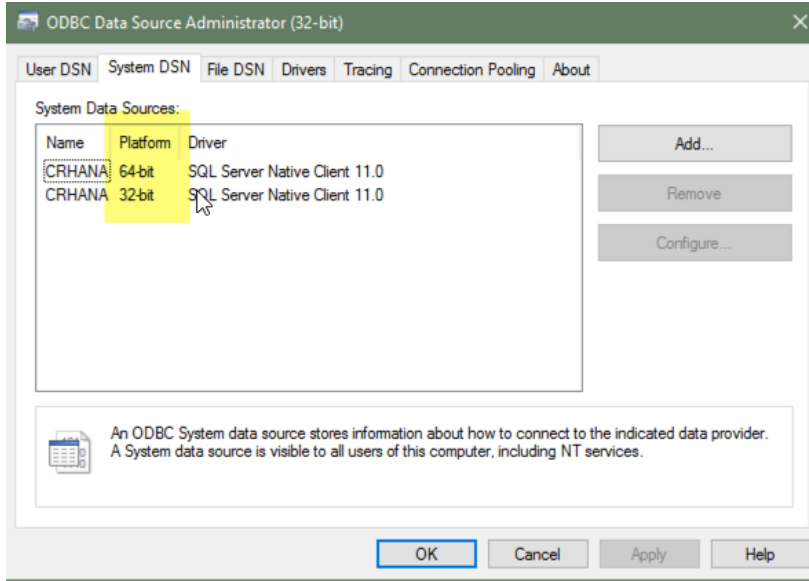
A new System ODBC connection has to be created. Name the ODBC CRHANA (this is compulsory) and use a default database.

Go to: Control Panel\All Control Panel Items\Administrative Tools

NOTE: If your Operative System has two ODBC Data Sources for different bit platforms like in the picture below, create the connection in both of them. If you have only one, create only one.

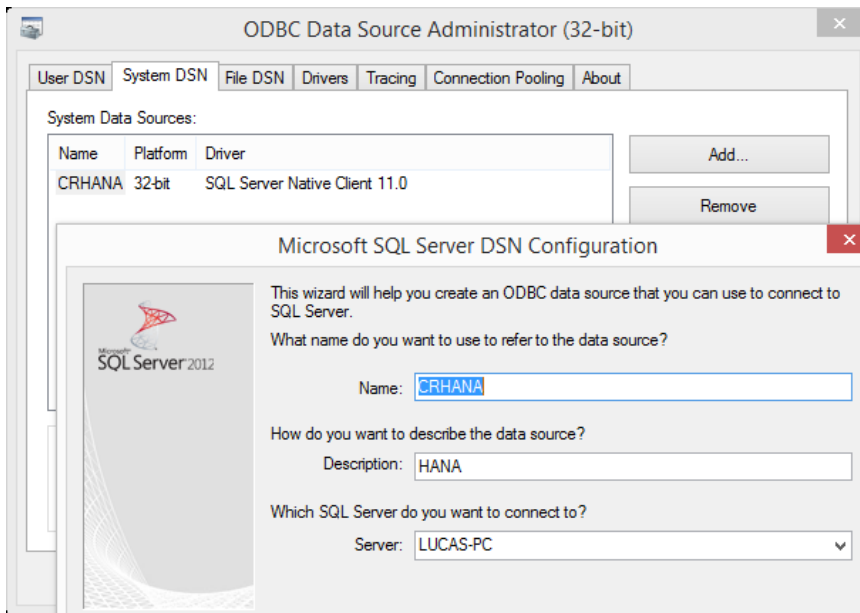


After creating the ODBC connection and opening any of the ODBC Data Sources you should see the same connector but with different platforms.



## 1.1 SQL

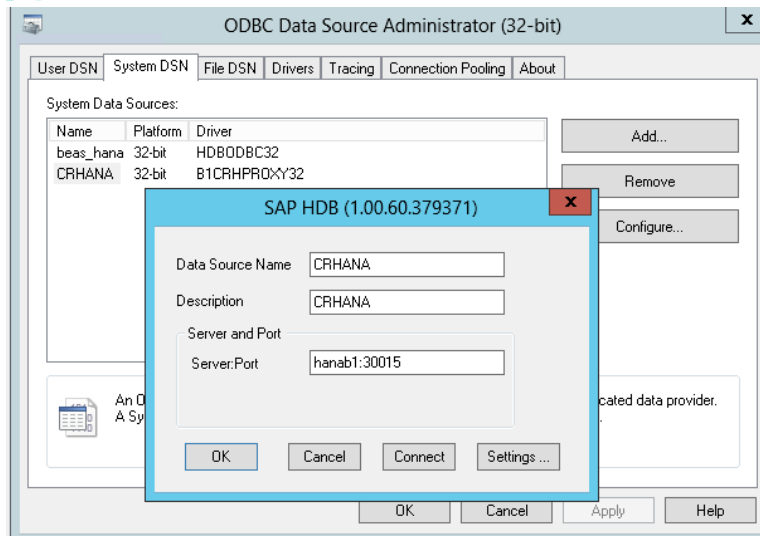
For SQL create a new ODBC connection manually.



## 1.2 HANA

If the implementation is on HANA environment create using the following driver

B1CRHPROXY32

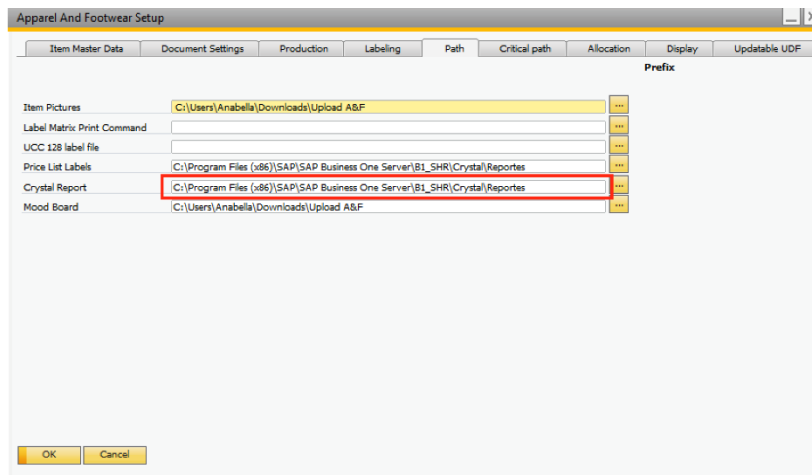


## 2 Download Crystal Files

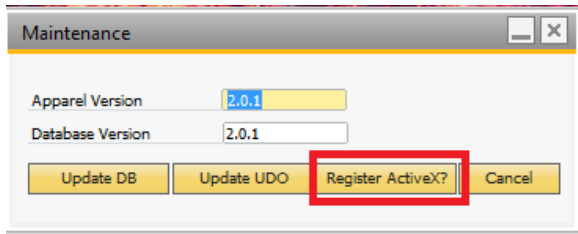
1. If you were given a user and a password to access to the FTP, download the Crystal files in: <http://om.argentisconsulting.com/Apparel/Releases>. If not, ask to support@argentisconsulting for the Reports.
2. Save the .zip file in the Server Shared Folder. Default path is: ServerIPOrAlias\Program Files (x86)\SAP\SAP Business One Server\B1\_SHR\Crystal
3. Click on Unrar here. A new folder will be created named “Reports”
4. Click on the folder mentioned above and then open the CommandReports folder
  - 4.1. SQL
    - 4.1.1. Copy all the files inside the SQL folder
  - 4.2. HANA
    - 4.2.1. Copy all the files inside the HANA folder
5. Paste the copied files in the folder “Reportes”. If a window pops up, click on “Replace them all”.

## 3 SAP B1 Client Configuration

1. In SAP go to Apparel and Footwear → Administration → Setup → General Settings → Sheet Path. Repeat the locations in the field Crystal Report.



2. Register the crystal reports. Please go to: Apparel and Footwear / Administration / Setup / Maintenance. Select the option "Register ActiveX".



**Note:** Each time the version of Apparel and Footwear is update, this last step should be repeated.

## 4 AFS reports for SAP marketing documents

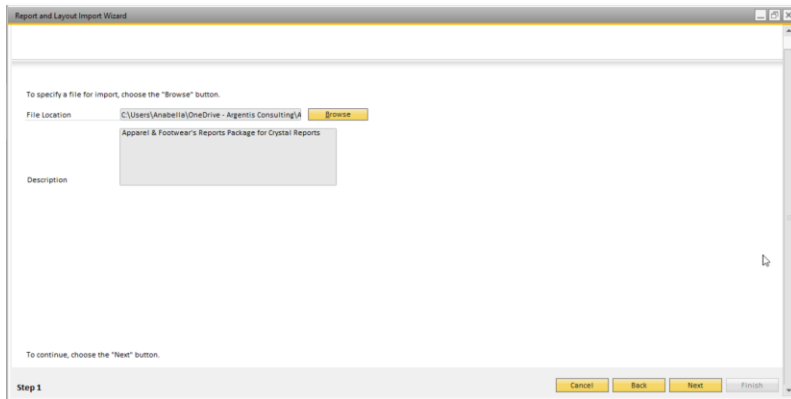
Download the report pack ApparelCRAII form:

<http://om.argentisconsulting.com/Apparel/Releases/Crystal%20Reports/>

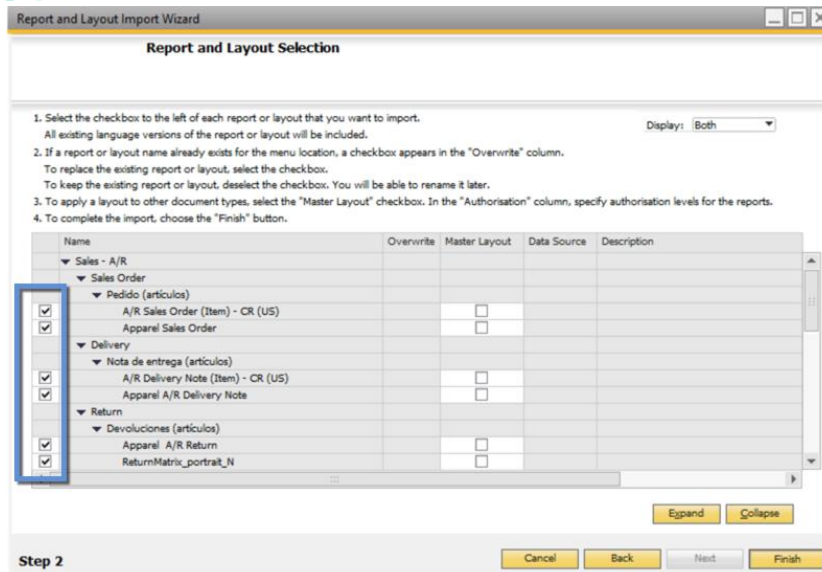
### 4.1 Reports for SAP Marketing Documents Configuration

Here are the steps you need to follow to import

1. Open the Report and Layout Manager and click on import
2. In the First Step Browsw the ApparelCRAII.b1px fike and click on Next



3. In the Second Step select the Apparel reports you want to import



- In the third Step click on Close
- Open the desired Marketing Document and in the Layout and Sequence Set as Default the Apparel Report for the Marketing Document

